

Manufacturer/Supplier:

WUXI DONGLIN SCI&TECH DEVELOPMENT CO., LTD

Address: A1-203 Mingpin CityII, No.8 Xihudong Road, Liangxi District
Wuxi Jiangsu Province, China

TELE: 86-510-82732223

FAX: 86-510-82720101-8014

Web : www.dldevelop.com

Email: info@dldevelop.com.cn service@dldevelop.com.cn

Product name: Rabbit anti-Estrogen Receptor beta Antibody

Catalog: DL98549A

Synonyms: ESTRB; NR3A2; Estrogen receptor beta; ER-beta;
Nuclear receptor subfamily 3 group A member 2

Immunogen: Recombinant full length protein of human Estrogen
Receptor beta. The exact sequence is proprietary.

Form: Liquid

Concentration: 1mg/mL

Size: 100 ul/50 ul

Host: Rabbit

Reactivity: Human, Mouse, Rat

Application: WB, IHC

Clonality: Polyclonal

Dilution: WB (1/500 - 1/2000),
IHC (1/50 - 1/200)

Entrez Gene: 2100/13983/25149

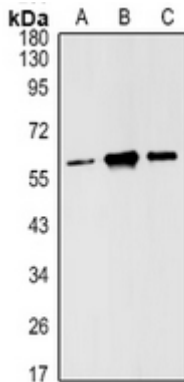
SwissProt: Q92731/O08537/Q62986

Purification: The antibody was purified by immunogen affinity chromatography.

Buffer: Liquid in 0.42% Potassium phosphate, 0.87% Sodium chloride, pH 7.3, 30% glycerol, and 0.01% sodium azide.

WB description:

Western blot analysis of Estrogen Receptor beta expression in MCF7 (A), mouse ovary(B), rat ovary (C) whole cell lysates.



IHC description:

Immunohistochemical analysis of Estrogen Receptor beta staining

in mouse lung formalin fixed paraffin embedded tissue section. The section was pre-treated using heat mediated antigen retrieval with sodium citrate buffer (pH 6.0). The section was then incubated with the antibody at room temperature and detected using an HRP conjugated compact polymer system. DAB was used as the chromogen. The section was then counterstained with haematoxylin and mounted with DPX.

Storage:

Store at -20°C. Avoid repeated freeze / thaw cycles.