

Manufacturer/Supplier:

WUXI DONGLIN SCI&TECH DEVELOPMENT CO., LTD

Address: A1-203 Mingpin CityII, No.8 Xihudong Road, Liangxi District
Wuxi Jiangsu Province, China

TELE: 86-510-82732223

FAX: 86-510-82720101-8014

Web : www.dldevelop.com

Email: info@dldevelop.com.cn service@dldevelop.com.cn

Product name: Rabbit anti-Dectin 1 Antibody

Catalog: DL98511A

Synonyms: BGR; CLECSF12; DECTIN1; C-type lectin domain family 7 member A; Beta-glucan receptor; C-type lectin superfamily member 12; Dendritic cell-associated C-type lectin 1; DC-associated C-type lectin 1; Dectin-1

Immunogen: KLH-conjugated synthetic peptide of human Dectin 1

Form: Liquid

Concentration: 1mg/mL

Size: 100 ul/50 ul

Host: Rabbit

Reactivity: Human, Mouse, Rat

Application: WB

Clonality: Polyclonal

Dilution: WB (1/500 - 1/2000)

Entrez Gene: 64581/56644

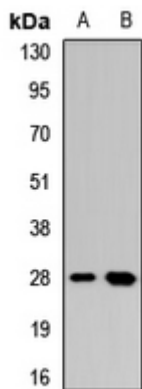
SwissProt: Q9BXN2/Q6QLQ4

Purification: The antibody was purified by immunogen affinity chromatography.

Buffer: Liquid in 0.42% Potassium phosphate, 0.87% Sodium chloride, pH 7.3, 30% glycerol, and 0.01% sodium azide.

WB description:

Western blot analysis of Dectin 1 expression in MCF7 (A), mouse liver (B) whole cell lysates.

**Storage:**

Store at -20°C. Avoid repeated freeze / thaw cycles.