

**Manufacturer/Supplier:**

WUXI DONGLIN SCI&TECH DEVELOPMENT CO., LTD

**Address:** A1-203 Mingpin CityII, No.8 Xihudong Road, Liangxi District  
Wuxi Jiangsu Province, China

**TELE:** 86-510-82732223

**FAX:** 86-510-82720101-8014

**Web :** [www.dldevelop.com](http://www.dldevelop.com)

**Email:** [info@dldevelop.com.cn](mailto:info@dldevelop.com.cn)    [service@dldevelop.com.cn](mailto:service@dldevelop.com.cn)

**Product name:** Rabbit anti-Cytochrome P450 2C18 Antibody

**Catalog:** DL98196A

**Synonyms:** Cytochrome P450 2C18; CYP11C18; Cytochrome  
P450-6b/29c

**Immunogen:** Recombinant full length protein of human  
Cytochrome P450 2C18

**Form:** Liquid

**Concentration:** 1mg/mL

**Size:** 100 ul/50 ul

**Host:** Rabbit

**Reactivity:** Human, Mouse, Rat

**Application:** WB, IHC

**Clonality:** Polyclonal

**Dilution:** WB (1/500 - 1/2000),  
IHC (1/50 - 1/200)

**Entrez Gene:** 1562

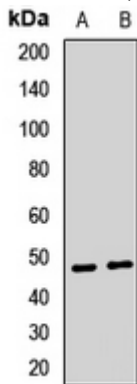
**SwissProt:** P33260

**Purification:** The antibody was purified by immunogen affinity chromatography.

**Buffer:** Liquid in 0.42% Potassium phosphate, 0.87% Sodium chloride, pH 7.3, 30% glycerol, and 0.01% sodium azide.

### WB description:

Western blot analysis of Cytochrome P450 2C18 expression in mouse liver (A), rat liver (B) whole cell lysates.



### IHC description:

Immunohistochemical analysis of Cytochrome P450 2C18 staining

in human liver cancer formalin fixed paraffin embedded tissue section. The section was pre-treated using heat mediated antigen retrieval with sodium citrate buffer (pH 6.0). The section was then incubated with the antibody at room temperature and detected using an HRP conjugated compact polymer system. DAB was used as the chromogen. The section was then counterstained with haematoxylin and mounted with DPX.

**Storage:**

Store at -20°C. Avoid repeated freeze / thaw cycles.