

**Manufacturer/Supplier:**

WUXI DONGLIN SCI&TECH DEVELOPMENT CO., LTD

**Address:** A1-203 Mingpin CityII, No.8 Xihudong Road, Liangxi District  
Wuxi Jiangsu Province, China

TELE: 86-510-82732223

FAX: 86-510-82720101-8014

**Web :** [www.dldevelop.com](http://www.dldevelop.com)

Email: [info@dldevelop.com.cn](mailto:info@dldevelop.com.cn) [service@dldevelop.com.cn](mailto:service@dldevelop.com.cn)

**Product name:** Rabbit anti-ALAS-E Antibody

**Catalog:** DL98050A

**Synonyms:** ALASE; ASB; 5-aminolevulinate synthase,  
erythroid-specific, mitochondrial; ALAS-E;  
5-aminolevulinic acid synthase 2; Delta-ALA  
synthase 2; Delta-aminolevulinate synthase 2

**Immunogen:** Recombinant full length protein of human ALAS-E

**Form:** Liquid

**Concentration:** 1mg/mL

**Size:** 100 ul/50 ul

**Host:** Rabbit

**Reactivity:** Human, Mouse, Rat

**Application:** WB, IF/IC

**Clonality:** Polyclonal

**Dilution:** WB (1/500 - 1/2000),

IF/IC (1/50 - 1/200)

**Entrez Gene:** 212/11656/25748

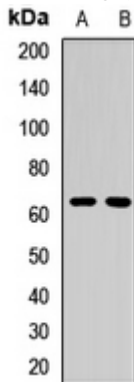
**SwissProt:** P22557/P08680/Q63147

**Purification:** The antibody was purified by immunogen affinity chromatography.

**Buffer:** Liquid in 0.42% Potassium phosphate, 0.87% Sodium chloride, pH 7.3, 30% glycerol, and 0.01% sodium azide.

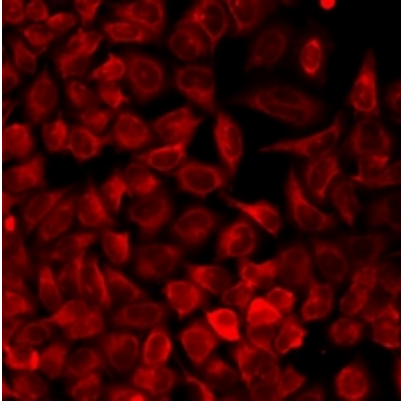
**WB description:**

Western blot analysis of ALAS-E expression in HEK293T (A), mouse lung (B) whole cell lysates.



**IF/ICC description:**

Immunofluorescent analysis of ALAS-E staining in HeLa cells. Formalin-fixed cells were permeabilized with 0.1% Triton X-100 in TBS for 5-10 minutes and blocked with 3% BSA-PBS for 30 minutes at room temperature. Cells were probed with the primary antibody



**Storage:**

Store at -20°C. Avoid repeated freeze / thaw cycles.