

**Manufacturer/Supplier:**

WUXI DONGLIN SCI&TECH DEVELOPMENT CO., LTD

**Address:** A1-203 Mingpin CityII, No.8 Xihudong Road, Liangxi District  
Wuxi Jiangsu Province, China

TELE: 86-510-82732223

FAX: 86-510-82720101-8014

**Web :** [www.dldevelop.com](http://www.dldevelop.com)

Email: [info@dldevelop.com.cn](mailto:info@dldevelop.com.cn)    [service@dldevelop.com.cn](mailto:service@dldevelop.com.cn)

**Product name:** Rabbit anti-RSK2 Antibody

**Catalog:** DL97939A

**Synonyms:** ISPK1; MAPKAPK1B; RSK2; Ribosomal protein  
S6 kinase alpha-3; S6K-alpha-3; 90 kDa ribosomal  
protein S6 kinase 3; p90-RSK 3; p90RSK3;  
Insulin-stimulated protein kinase 1; ISPK-1; MAP  
kinase-activated protein kinase 1b; MAPK-activated  
protein kinase 1b; MAPK

**Immunogen:** Recombinant full length protein of human RSK2

**Form:** Liquid

**Concentration:** 1mg/mL

**Size:** 100 ul/50 ul

**Host:** Rabbit

**Reactivity:** Human, Mouse, Rat

**Application:** WB, IF/IC

**Clonality:** Polyclonal

**Dilution:** WB (1/500 - 1/2000),  
IF/IC (1/50 - 1/200)

**Entrez Gene:** 6197/110651

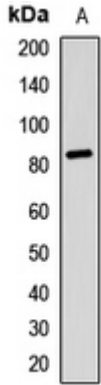
**SwissProt:** P51812/P18654

**Purification:** The antibody was purified by immunogen affinity chromatography.

**Buffer:** Liquid in 0.42% Potassium phosphate, 0.87% Sodium chloride, pH 7.3, 30% glycerol, and 0.01% sodium azide.

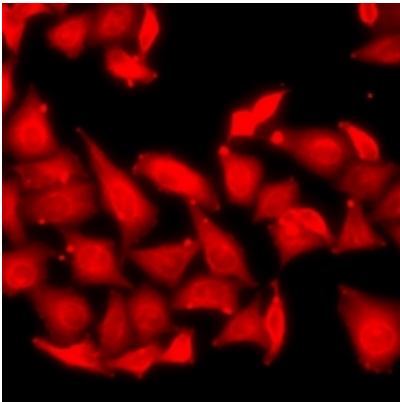
**WB description:**

Western blot analysis of RSK2 expression in mouse lung (A) whole cell lysates.



### IF/ICC description:

Immunofluorescent analysis of RSK2 staining in HeLa cells. Formalin-fixed cells were permeabilized with 0.1% Triton X-100 in TBS for 5-10 minutes and blocked with 3% BSA-PBS for 30 minutes at room temperature. Cells were probed with the primary antibody i



### Storage:



Store at -20°C. Avoid repeated freeze / thaw cycles.