

Manufacturer/Supplier:

WUXI DONGLIN SCI&TECH DEVELOPMENT CO., LTD

Address: A1-203 Mingpin CityII, No.8 Xihudong Road. Liangxi District
Wuxi Jiangsu Province, China

TELE: 86-510-82732223

FAX: 86-510-82720101-8014

Web : www.dldevelop.com

Email: info@dldevelop.com.cn service@dldevelop.com.cn

Product name: Rabbit anti-CISD2 Antibody

Catalog: DL97926A

Synonyms: CDGSH2; ERIS; ZCD2; CDGSH iron-sulfur domain-containing protein 2; Endoplasmic reticulum intermembrane small protein; MitoNEET-related 1 protein; Miner1; Nutrient-deprivation autophagy factor-1; NAF-1

Immunogen: Recombinant full length protein of human CISD2

Form: Liquid

Concentration: 1mg/mL

Size: 100 ul/50 ul

Host: Rabbit

Reactivity: Human, Rat

Application: WB

Clonality: Polyclonal

Dilution: WB (1/500 - 1/2000)

Entrez Gene: 493856

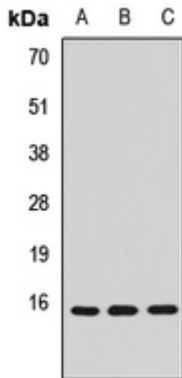
SwissProt: Q8N5K1

Purification: The antibody was purified by immunogen affinity chromatography.

Buffer: Liquid in 0.42% Potassium phosphate, 0.87% Sodium chloride, pH 7.3, 30% glycerol, and 0.01% sodium azide.

WB description:

Western blot analysis of CISD2 expression in A549 (A), K562 (B), rat lung (C) whole cell lysates.



Storage:

Store at -20°C. Avoid repeated freeze / thaw cycles.