

Manufacturer/Supplier:

WUXI DONGLIN SCI&TECH DEVELOPMENT CO., LTD

Address: A1-203 Mingpin CityII, No.8 Xihudong Road. Liangxi District
Wuxi Jiangsu Province, China

TELE: 86-510-82732223

FAX: 86-510-82720101-8014

Web : www.dldevelop.com

Email: info@dldevelop.com.cn service@dldevelop.com.cn

Product name: Rabbit anti-NEDD1 Antibody

Catalog: DL97919A

Synonyms: Protein NEDD1; Neural precursor cell expressed developmentally down-regulated protein 1; NEDD-1

Immunogen: Recombinant full length protein of human NEDD1

Form: Liquid

Concentration: 1mg/mL

Size: 100 ul/50 ul

Host: Rabbit

Reactivity: Human, Mouse, Rat

Application: WB

Clonality: Polyclonal

Dilution: WB (1/500 - 1/2000)

Entrez Gene: 121441/17997

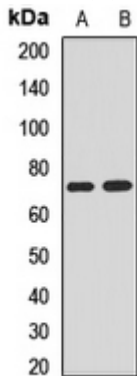
SwissProt: Q8NHV4/P33215

Purification: The antibody was purified by immunogen affinity chromatography.

Buffer: Liquid in 0.42% Potassium phosphate, 0.87% Sodium chloride, pH 7.3, 30% glycerol, and 0.01% sodium azide.

WB description:

Western blot analysis of NEDD1 expression in mouse brain (A), rat brain (B) whole cell lysates.



Storage:

Store at -20°C. Avoid repeated freeze / thaw cycles.