

Manufacturer/Supplier:

WUXI DONGLIN SCI&TECH DEVELOPMENT CO., LTD

Address: A1-203 Mingpin CityII, No.8 Xihudong Road, Liangxi District
Wuxi Jiangsu Province, China

TELE: 86-510-82732223

FAX: 86-510-82720101-8014

Web : www.dldevelop.com

Email: info@dldevelop.com.cn service@dldevelop.com.cn

Product name: Rabbit anti-Histone H3 (MonoMethyl R26)
Antibody

Catalog: DL97749A

Synonyms: H3FT; Histone H3.1t; H3/t; H3t; H3/g

Immunogen: A synthetic methylated peptide corresponding to
residues surrounding R26 of human Histone H3
(MonoMethyl R26)

Form: Liquid

Concentration: 1mg/mL

Size: 100 ul/50 ul

Host: Rabbit

Reactivity: Human, Mouse, Rat

Application: WB, IF/IC, IP

Clonality: Polyclonal

Dilution: WB (1/500 - 1/2000),

IF/IC (1/50 - 1/200), IP (1/50 -
1/100)

Entrez Gene: 8290

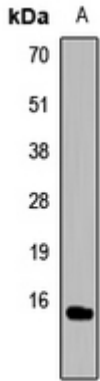
SwissProt: Q16695

Purification: The antibody was purified by immunogen affinity chromatography.

Buffer: Liquid in 0.42% Potassium phosphate, 0.87% Sodium chloride, pH 7.3, 30% glycerol, and 0.01% sodium azide.

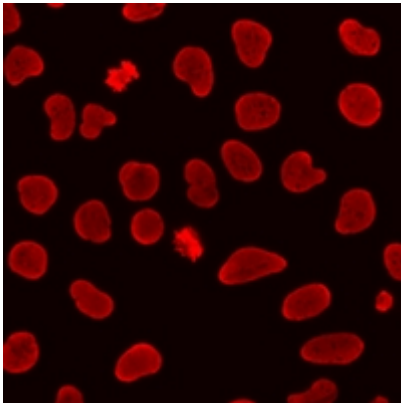
WB description:

Western blot analysis of Histone H3 (MonoMethyl R26) expression in Hela (A) whole cell lysates.



IF/ICC description:

Immunofluorescent analysis of Histone H3 (MonoMethyl R26) staining in HEK293T cells. Formalin-fixed cells were permeabilized with 0.1% Triton X-100 in TBS for 5-10 minutes and blocked with 3% BSA-PBS for 30 minutes at room temperature. Cells were probed w



IP description:

Storage:

Store at -20°C. Avoid repeated freeze / thaw cycles.