

Manufacturer/Supplier:

WUXI DONGLIN SCI&TECH DEVELOPMENT CO., LTD

Address: A1-203 Mingpin CityII, No.8 Xihudong Road, Liangxi District
Wuxi Jiangsu Province, China

TELE: 86-510-82732223

FAX: 86-510-82720101-8014

Web : www.dldevelop.com

Email: info@dldevelop.com.cn service@dldevelop.com.cn

Product name: Rabbit anti-SKP1 Antibody

Catalog: DL97710A

Synonyms: EMC19; OCP2; SKP1A; TCEB1L; S-phase
kinase-associated protein 1;
Cyclin-A/CDK2-associated protein p19; Organ of
Corti protein 2; OCP-2; Organ of Corti protein II;
OCP-II; RNA polymerase II elongation factor-like
protein; SIII; Transcription elongation fac

Immunogen: Recombinant full length protein of human SKP1

Form: Liquid

Concentration: 1mg/mL

Size: 100 ul/50 ul

Host: Rabbit

Reactivity: Human, Mouse, Rat

Application: WB, IHC

Clonality: Polyclonal

Dilution: WB (1/500 - 1/2000),
IHC (1/50 - 1/200)

Entrez Gene: 6500/21402/287280

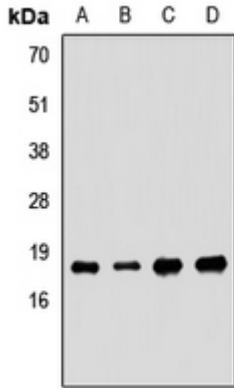
SwissProt: P63208/Q9WTX5/Q6PEC4

Purification: The antibody was purified by immunogen affinity chromatography.

Buffer: Liquid in 0.42% Potassium phosphate, 0.87% Sodium chloride, pH 7.3, 30% glycerol, and 0.01% sodium azide.

WB description:

Western blot analysis of SKP1 expression in A549 (A), A431 (B), Hela (C), mouse kidney (D) whole cell lysates.



IHC description:

Immunohistochemical analysis of SKP1 staining in human lung cancer formalin fixed paraffin embedded tissue section. The section was pre-treated using heat mediated antigen retrieval with sodium citrate buffer (pH 6.0). The section was then incubated with the antibody at room temperature and detected using an HRP conjugated compact polymer system. DAB was used as the chromogen. The section was then counterstained with haematoxylin and mounted with DPX.

Storage:

Store at -20°C. Avoid repeated freeze / thaw cycles.