

Manufacturer/Supplier:

WUXI DONGLIN SCI&TECH DEVELOPMENT CO., LTD

Address: A1-203 Mingpin CityII, No.8 Xihudong Road, Liangxi District
Wuxi Jiangsu Province, China

TELE: 86-510-82732223

FAX: 86-510-82720101-8014

Web : www.dldevelop.com

Email: info@dldevelop.com.cn service@dldevelop.com.cn

Product name: Rabbit anti-Histone H3 Antibody

Catalog: DL97681A

Synonyms: H3FT; Histone H3.1t; H3/t; H3t; H3/g

Immunogen: KLH-conjugated synthetic peptide of human
Histone H3

Form: Liquid

Concentration: 1mg/mL

Size: 100 ul/50 ul

Host: Rabbit

Reactivity: Human, Mouse, Rat

Application: WB, IHC, IP, ChIP

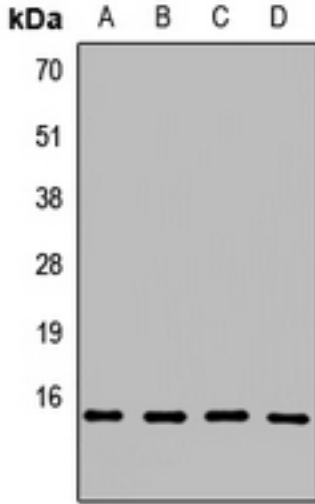
Clonality: Polyclonal

Dilution: WB (1/500 - 1/2000),
IHC (1/50 - 1/200), IP (1/50 -
1/100), ChIP (1/100 - 1/500)

Entrez Gene:	8290
SwissProt:	Q16695
Purification:	The antibody was purified by immunogen affinity chromatography.
Buffer:	Liquid in 0.42% Potassium phosphate, 0.87% Sodium chloride, pH 7.3, 30% glycerol, and 0.01% sodium azide.

WB description:

Western blot analysis of Histone H3 expression in A431 (A), Hela (B), mouse liver (C), rat kidney (D) whole cell lysates.



IHC description:

Immunohistochemical analysis of Histone H3 staining in human brain formalin fixed paraffin embedded tissue section. The section was pre-treated using heat mediated antigen retrieval with sodium citrate buffer (pH 6.0). The section was then incubated with the antibody at room temperature and detected using an HRP conjugated compact polymer system. DAB was used as the chromogen. The section was then counterstained with haematoxylin and mounted with DPX.

IP description:

ChIP description:

Storage:

Store at -20°C. Avoid repeated freeze / thaw cycles.