

Manufacturer/Supplier:

WUXI DONGLIN SCI&TECH DEVELOPMENT CO., LTD

Address: A1-203 Mingpin CityII, No.8 Xihudong Road. Liangxi District
Wuxi Jiangsu Province, China

TELE: 86-510-82732223

FAX: 86-510-82720101-8014

Web : www.dldevelop.com

Email: info@dldevelop.com.cn service@dldevelop.com.cn

Product name: Rabbit anti-POLR2F Antibody

Catalog: DL97623A

Synonyms: POLRF; DNA-directed RNA polymerases I, II, and III subunit RPABC2; RNA polymerases I, II, and III subunit ABC2; DNA-directed RNA polymerase II subunit F; DNA-directed RNA polymerases I, II, and III 14.4 kDa polypeptide; RPABC14.4; RPB14.4; RPB6 homolog; R

Immunogen: Recombinant full length protein of human POLR2F

Form: Liquid

Concentration: 1mg/mL

Size: 100 ul/50 ul

Host: Rabbit

Reactivity: Human, Mouse, Rat

Application: WB, IF/IC

Clonality: Polyclonal

Dilution: WB (1/500 - 1/2000),
IF/IC (1/50 - 1/200)

Entrez Gene: 5435/69833/83503

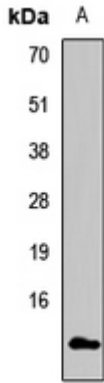
SwissProt: P61218/P61219/O88828

Purification: The antibody was purified by immunogen affinity chromatography.

Buffer: Liquid in 0.42% Potassium phosphate, 0.87% Sodium chloride, pH 7.3, 30% glycerol, and 0.01% sodium azide.

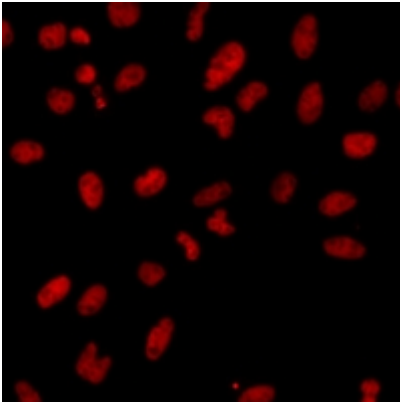
WB description:

Western blot analysis of POLR2F expression in mouse liver (A) whole cell lysates.



IF/ICC description:

Immunofluorescent analysis of POLR2F staining in HeLa cells. Formalin-fixed cells were permeabilized with 0.1% Triton X-100 in TBS for 5-10 minutes and blocked with 3% BSA-PBS for 30 minutes at room temperature. Cells were probed with the primary antibody



Storage:



Store at -20°C. Avoid repeated freeze / thaw cycles.