

Manufacturer/Supplier:

WUXI DONGLIN SCI&TECH DEVELOPMENT CO., LTD

Address: A1-203 Mingpin CityII, No.8 Xihudong Road, Liangxi District
Wuxi Jiangsu Province, China

TELE: 86-510-82732223

FAX: 86-510-82720101-8014

Web : www.dldevelop.com

Email: info@dldevelop.com.cn service@dldevelop.com.cn

Product name: Rabbit anti-UPF1 Antibody

Catalog: DL97597A

Synonyms: KIAA0221; RENT1; Regulator of nonsense transcripts 1; ATP-dependent helicase RENT1; Nonsense mRNA reducing factor 1; NORF1; Up-frameshift suppressor 1 homolog; hUpf1

Immunogen: KLH-conjugated synthetic peptide of human UPF1

Form: Liquid

Concentration: 1mg/mL

Size: 100 ul/50 ul

Host: Rabbit

Reactivity: Human, Mouse, Rat

Application: WB, IHC, IF/IC

Clonality: Polyclonal

Dilution: WB (1/500 - 1/2000),

IHC (1/50 - 1/200), IF/IC (1/50 - 1/200)

Entrez Gene: 5976/19704

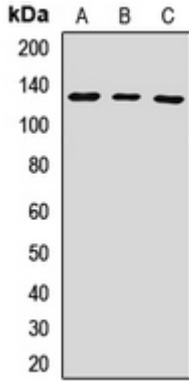
SwissProt: Q92900/Q9EPU0

Purification: The antibody was purified by immunogen affinity chromatography.

Buffer: Liquid in 0.42% Potassium phosphate, 0.87% Sodium chloride, pH 7.3, 30% glycerol, and 0.01% sodium azide.

WB description:

Western blot analysis of UPF1 expression in SHSY5Y (A), K562 (B), mouse liver (C) whole cell lysates.

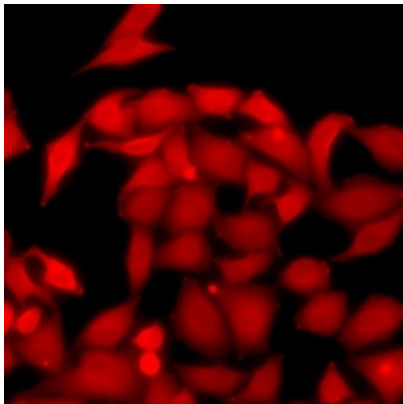


IHC description:

Immunohistochemical analysis of UPF1 staining in human brain formalin fixed paraffin embedded tissue section. The section was pre-treated using heat mediated antigen retrieval with sodium citrate buffer (pH 6.0). The section was then incubated with the antibody at room temperature and detected using an HRP conjugated compact polymer system. DAB was used as the chromogen. The section was then counterstained with haematoxylin and mounted with DPX.

IF/ICC description:

Immunofluorescent analysis of UPF1 staining in HeLa cells. Formalin-fixed cells were permeabilized with 0.1% Triton X-100 in TBS for 5-10 minutes and blocked with 3% BSA-PBS for 30 minutes at room temperature. Cells were probed with the primary antibody i



Storage:

Store at -20°C. Avoid repeated freeze / thaw cycles.