

Manufacturer/Supplier:

WUXI DONGLIN SCI&TECH DEVELOPMENT CO., LTD

Address: A1-203 Mingpin CityII, No.8 Xihudong Road, Liangxi District
Wuxi Jiangsu Province, China

TELE: 86-510-82732223

FAX: 86-510-82720101-8014

Web : www.dldevelop.com

Email: info@dldevelop.com.cn service@dldevelop.com.cn

Product name: Rabbit anti-BAF60B Antibody

Catalog: DL97505A

Synonyms: BAF60B; SWI/SNF-related matrix-associated actin-dependent regulator of chromatin subfamily D member 2; 60 kDa BRG-1/Brm-associated factor subunit B; BRG1-associated factor 60B; BAF60B

Immunogen: Recombinant full length protein of human BAF60B

Form: Liquid

Concentration: 1mg/mL

Size: 100 ul/50 ul

Host: Rabbit

Reactivity: Human, Mouse

Application: WB

Clonality: Polyclonal

Dilution: WB (1/500 - 1/2000)

Entrez Gene: 6603/83796

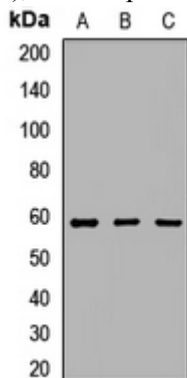
SwissProt: Q92925/Q99JR8

Purification: The antibody was purified by immunogen affinity chromatography.

Buffer: Liquid in 0.42% Potassium phosphate, 0.87% Sodium chloride, pH 7.3, 30% glycerol, and 0.01% sodium azide.

WB description:

Western blot analysis of BAF60B expression in Hela (A), Jurkat (B), mouse spleen (C) whole cell lysates.



Storage:



Store at -20°C. Avoid repeated freeze / thaw cycles.