

Manufacturer/Supplier:

WUXI DONGLIN SCI&TECH DEVELOPMENT CO., LTD

Address: A1-203 Mingpin CityII, No.8 Xihudong Road, Liangxi District
Wuxi Jiangsu Province, China

TELE: 86-510-82732223

FAX: 86-510-82720101-8014

Web : www.dldevelop.com

Email: info@dldevelop.com.cn service@dldevelop.com.cn

Product name: Rabbit anti-EZH2 Antibody

Catalog: DL97423A

Synonyms: KMT6; Histone-lysine N-methyltransferase EZH2;
ENX-1; Enhancer of zeste homolog 2; Lysine
N-methyltransferase 6

Immunogen: Recombinant full length protein of human EZH2

Form: Liquid

Concentration: 1mg/mL

Size: 100 ul/50 ul

Host: Rabbit

Reactivity: Human, Mouse

Application: WB, IF/IC

Clonality: Polyclonal

Dilution: WB (1/500 - 1/2000),
IF/IC (1/50 - 1/200)

Entrez Gene: 2146/14056

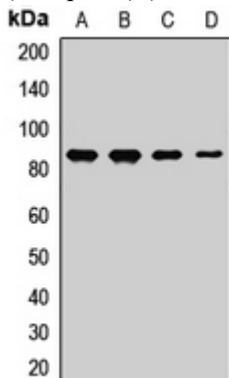
SwissProt: Q15910/Q61188

Purification: The antibody was purified by immunogen affinity chromatography.

Buffer: Liquid in 0.42% Potassium phosphate, 0.87% Sodium chloride, pH 7.3, 30% glycerol, and 0.01% sodium azide.

WB description:

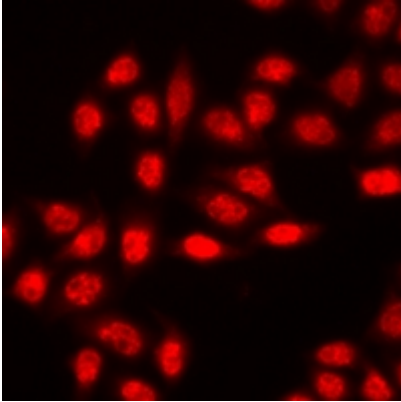
Western blot analysis of EZH2 expression in HL60 (A), MCF7 (B), HepG2 (C), mouse ovary (D) whole cell lysates.



IF/ICC description:

Immunofluorescent analysis of EZH2 staining in U2OS cells.

Formalin-fixed cells were permeabilized with 0.1% Triton X-100 in TBS for 5-10 minutes and blocked with 3% BSA-PBS for 30 minutes at room temperature. Cells were probed with the primary antibody i

**Storage:**

Store at -20°C. Avoid repeated freeze / thaw cycles.