

**Manufacturer/Supplier:**

WUXI DONGLIN SCI&TECH DEVELOPMENT CO., LTD

**Address:** A1-203 Mingpin CityII, No.8 Xihudong Road, Liangxi District  
Wuxi Jiangsu Province, China

TELE: 86-510-82732223

FAX: 86-510-82720101-8014

**Web :** [www.dldevelop.com](http://www.dldevelop.com)

Email: [info@dldevelop.com.cn](mailto:info@dldevelop.com.cn)    [service@dldevelop.com.cn](mailto:service@dldevelop.com.cn)

**Product name:** Rabbit anti-SLC11A2 Antibody

**Catalog:** DL97288A

**Synonyms:** DCT1; DMT1; NRAMP2; Natural  
resistance-associated macrophage protein 2;  
NRAMP 2; Divalent cation transporter 1; Divalent  
metal transporter 1; DMT-1; Solute carrier family  
11 member 2

**Immunogen:** Recombinant full length protein of human  
SLC11A2

**Form:** Liquid

**Concentration:** 1mg/mL

**Size:** 100 ul/50 ul

**Host:** Rabbit

**Reactivity:** Human, Mouse, Rat

**Application:** WB

**Clonality:** Polyclonal

**Dilution:** WB (1/500 - 1/2000)

**Entrez Gene:** 4891/18174/25715

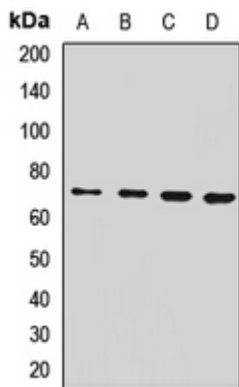
**SwissProt:** P49281/P49282/O54902

**Purification:** The antibody was purified by immunogen affinity chromatography.

**Buffer:** Liquid in 0.42% Potassium phosphate, 0.87% Sodium chloride, pH 7.3, 30% glycerol, and 0.01% sodium azide.

**WB description:**

Western blot analysis of SLC11A2 expression in SW620 (A), mouse kidney (B), mouse spleen (C), rat kidney (D) whole cell lysates.



### Storage:

Store at -20°C. Avoid repeated freeze / thaw cycles.