

Manufacturer/Supplier:

WUXI DONGLIN SCI&TECH DEVELOPMENT CO., LTD

Address: A1-203 Mingpin CityII, No.8 Xihudong Road, Liangxi District
Wuxi Jiangsu Province, China

TELE: 86-510-82732223

FAX: 86-510-82720101-8014

Web : www.dldevelop.com

Email: info@dldevelop.com.cn service@dldevelop.com.cn

Product name: Rabbit anti-INI1 Antibody

Catalog: DL97105A

Synonyms: BAF47; INI1; SNF5L1; SWI/SNF-related matrix-associated actin-dependent regulator of chromatin subfamily B member 1; BRG1-associated factor 47; BAF47; Integrase interactor 1 protein; SNF5 homolog; hSNF5

Immunogen: Recombinant full length protein of human INI1

Form: Liquid

Concentration: 1mg/mL

Size: 100 ul/50 ul

Host: Rabbit

Reactivity: Human, Mouse, Rat

Application: WB, IHC, IF/IC, IP, ChIP

Clonality: Polyclonal

Dilution: WB (1/500 - 1/2000),
IHC (1/50 - 1/200), IF/IC (1/50 -
1/200), IP (1/50 - 1/200), ChIP
(1/20 - 1/100)

Entrez Gene: 6598/20587

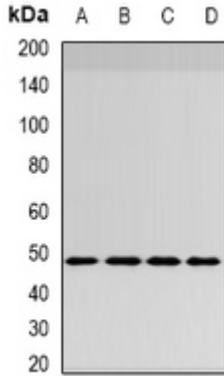
SwissProt: Q12824/Q9Z0H3

Purification: The antibody was purified by immunogen affinity chromatography.

Buffer: Liquid in 0.42% Potassium phosphate, 0.87% Sodium chloride, pH 7.3, 30% glycerol, and 0.01% sodium azide.

WB description:

Western blot analysis of INI1 expression in HepG2 (A), MCF7 (B), mouse brain (C), mouse lung (D) whole cell lysates.

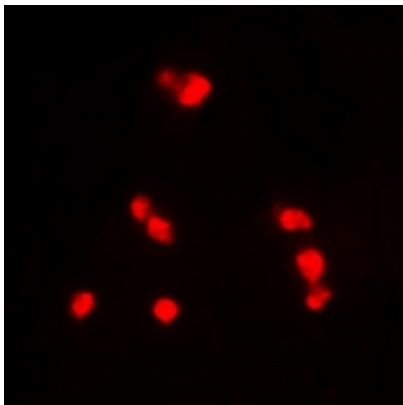


IHC description:

Immunohistochemical analysis of INI1 staining in human breast cancer formalin fixed paraffin embedded tissue section. The section was pre-treated using heat mediated antigen retrieval with sodium citrate buffer (pH 6.0). The section was then incubated with the antibody at room temperature and detected using an HRP conjugated compact polymer system. DAB was used as the chromogen. The section was then counterstained with haematoxylin and mounted with DPX.

IF/ICC description:

Immunofluorescent analysis of INI1 staining in MCF7 cells. Formalin-fixed cells were permeabilized with 0.1% Triton X-100 in TBS for 5-10 minutes and blocked with 3% BSA-PBS for 30 minutes at room temperature. Cells were probed with the primary antibody i



IP description:

ChIP description:

Storage:

Store at -20°C. Avoid repeated freeze / thaw cycles.