

Manufacturer/Supplier:

WUXI DONGLIN SCI&TECH DEVELOPMENT CO., LTD

Address: A1-203 Mingpin CityII, No.8 Xihudong Road, Liangxi District
Wuxi Jiangsu Province, China

TELE: 86-510-82732223

FAX: 86-510-82720101-8014

Web : www.dldevelop.com

Email: info@dldevelop.com.cn service@dldevelop.com.cn

Product name: Rabbit anti-SMARCAD1 Antibody

Catalog: DL97104A

Synonyms: KIAA1122; SWI/SNF-related matrix-associated
actin-dependent regulator of chromatin subfamily A
containing DEAD/H box 1; ATP-dependent helicase
1; hHEL1

Immunogen: Recombinant full length protein of human
SMARCAD1

Form: Liquid

Concentration: 1mg/mL

Size: 100 ul/50 ul

Host: Rabbit

Reactivity: Human, Mouse

Application: WB, IF/IC, IP

Clonality: Polyclonal

Dilution: WB (1/500 - 1/2000),
IF/IC (1/50 - 1/100), IP (1/50 -
1/100)

Entrez Gene: 56916/13990

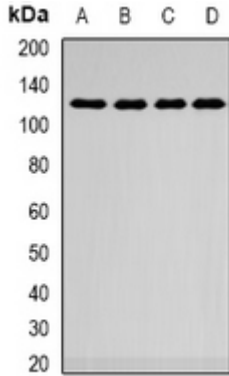
SwissProt: Q9H4L7/Q04692

Purification: The antibody was purified by immunogen affinity chromatography.

Buffer: Liquid in 0.42% Potassium phosphate, 0.87% Sodium chloride, pH 7.3, 30% glycerol, and 0.01% sodium azide.

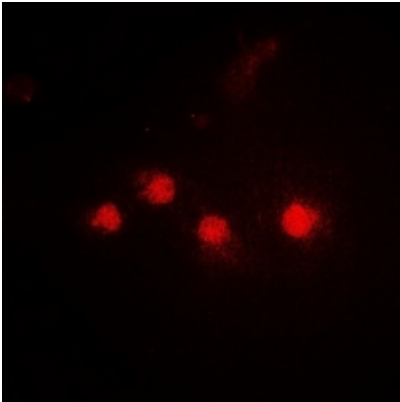
WB description:

Western blot analysis of SMARCAD1 expression in A549 (A), HepG2 (B), mouse kidney (C), mouse lung (D) whole cell lysates.



IF/ICC description:

Immunofluorescent analysis of SMARCAD1 staining in HepG2 cells. Formalin-fixed cells were permeabilized with 0.1% Triton X-100 in TBS for 5-10 minutes and blocked with 3% BSA-PBS for 30 minutes at room temperature. Cells were probed with the primary antib



IP description:

Storage:

Store at -20°C. Avoid repeated freeze / thaw cycles.