

**Manufacturer/Supplier:**

WUXI DONGLIN SCI&TECH DEVELOPMENT CO., LTD

**Address:** A1-203 Mingpin CityII, No.8 Xihudong Road, Liangxi District  
Wuxi Jiangsu Province, China

**TELE:** 86-510-82732223

**FAX:** 86-510-82720101-8014

**Web :** [www.dldevelop.com](http://www.dldevelop.com)

**Email:** [info@dldevelop.com.cn](mailto:info@dldevelop.com.cn)    [service@dldevelop.com.cn](mailto:service@dldevelop.com.cn)

**Product name:** Rabbit anti-SIRT1 Antibody

**Catalog:** DL97097A

**Synonyms:** SIR2L1; NAD-dependent protein deacetylase  
sirtuin-1; hSIRT1; Regulatory protein SIR2  
homolog 1; SIR2-like protein 1; hSIR2

**Immunogen:** KLH-conjugated synthetic peptide of human SIRT1

**Form:** Liquid

**Concentration:** 1mg/mL

**Size:** 100 ul/50 ul

**Host:** Rabbit

**Reactivity:** Human, Rat

**Application:** WB, IHC, IF/IC, IP,  
ChIP

**Clonality:** Polyclonal

**Dilution:** WB (1/500 - 1/2000),  
IHC (1/50 - 1/200), IF/IC (1/50 -

1/200), IP (1/50 - 1/200), ChIP  
(1/20 - 1/100)

**Entrez Gene:** 23411

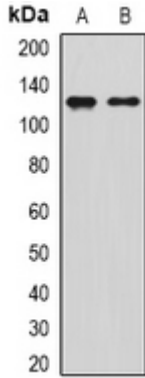
**SwissProt:** Q96EB6

**Purification:** The antibody was purified by immunogen affinity chromatography.

**Buffer:** Liquid in 0.42% Potassium phosphate, 0.87% Sodium chloride, pH 7.3, 30% glycerol, and 0.01% sodium azide.

**WB description:**

Western blot analysis of SIRT1 expression in Jurkat (A), MCF7 (B) whole cell lysates.

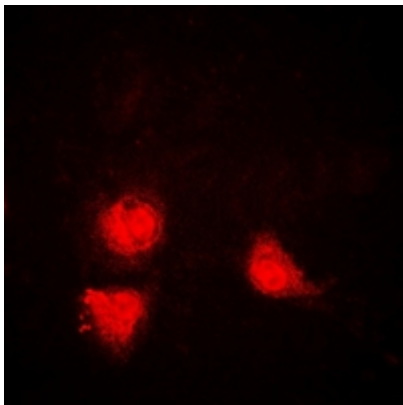


### IHC description:

Immunohistochemical analysis of SIRT1 staining in human lung cancer formalin fixed paraffin embedded tissue section. The section was pre-treated using heat mediated antigen retrieval with sodium citrate buffer (pH 6.0). The section was then incubated with the antibody at room temperature and detected using an HRP conjugated compact polymer system. DAB was used as the chromogen. The section was then counterstained with haematoxylin and mounted with DPX.

### IF/ICC description:

Immunofluorescent analysis of SIRT1 staining in Jurkat cells. Formalin-fixed cells were permeabilized with 0.1% Triton X-100 in TBS for 5-10 minutes and blocked with 3% BSA-PBS for 30 minutes at room temperature. Cells were probed with the primary antibody



**IP description:**

**ChIP description:**

**Storage:**

Store at -20°C. Avoid repeated freeze / thaw cycles.