

Manufacturer/Supplier:

WUXI DONGLIN SCI&TECH DEVELOPMENT CO., LTD

Address: A1-203 Mingpin CityII, No.8 Xihudong Road. Liangxi District
Wuxi Jiangsu Province, China

TELE: 86-510-82732223

FAX: 86-510-82720101-8014

Web : www.dldevelop.com

Email: info@dldevelop.com.cn service@dldevelop.com.cn

Product name: Rabbit anti-OLR1 Antibody

Catalog: DL96987A

Synonyms: CLEC8A; LOX1; Oxidized low-density lipoprotein receptor 1; Ox-LDL receptor 1; C-type lectin domain family 8 member A; Lectin-like oxidized LDL receptor 1; LOX-1; Lectin-like oxLDL receptor 1; hLOX-1; Lectin-type oxidized LDL receptor 1

Immunogen: Recombinant full length protein of human OLR1

Form: Liquid

Concentration: 1mg/mL

Size: 100 ul/50 ul

Host: Rabbit

Reactivity: Human, Mouse

Application: WB, IHC

Clonality: Polyclonal

Dilution: WB (1/500 - 1/2000),
IHC (1/50 - 1/200)

Entrez Gene: 4973/108078

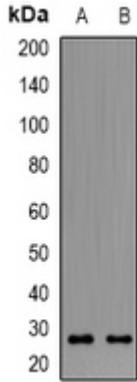
SwissProt: P78380/Q9EQ09

Purification: The antibody was purified by immunogen affinity chromatography.

Buffer: Liquid in 0.42% Potassium phosphate, 0.87% Sodium chloride, pH 7.3, 30% glycerol, and 0.01% sodium azide.

WB description:

Western blot analysis of OLR1 expression in Hela (A), HepG2 (B) whole cell lysates.



IHC description:

Immunohistochemical analysis of OLR1 staining in mouse testis formalin fixed paraffin embedded tissue section. The section was pre-treated using heat mediated antigen retrieval with sodium citrate buffer (pH 6.0). The section was then incubated with the antibody at room temperature and detected using an HRP conjugated compact polymer system. DAB was used as the chromogen. The section was then counterstained with haematoxylin and mounted with DPX.

Storage:

Store at -20°C. Avoid repeated freeze / thaw cycles.