

Manufacturer/Supplier:

WUXI DONGLIN SCI&TECH DEVELOPMENT CO., LTD

Address: A1-203 Mingpin CityII, No.8 Xihudong Road, Liangxi District
Wuxi Jiangsu Province, China

TELE: 86-510-82732223

FAX: 86-510-82720101-8014

Web : www.dldevelop.com

Email: info@dldevelop.com.cn service@dldevelop.com.cn

Product name: Rabbit anti-GBL Antibody

Catalog: DL96943A

Synonyms: GBL; LST8; Target of rapamycin complex subunit
LST8; TORC subunit LST8; G protein beta
subunit-like; Gable; Protein GbetaL; Mammalian
lethal with SEC13 protein 8; mLST8

Immunogen: Recombinant full length protein of human GBL

Form: Liquid

Concentration: 1mg/mL

Size: 100 ul/50 ul

Host: Rabbit

Reactivity: Human, Mouse, Rat

Application: WB, IF/IC

Clonality: Polyclonal

Dilution: WB (1/500 - 1/2000),

IF/IC (1/10 - 1/100)

Entrez Gene: 64223/56716/64226

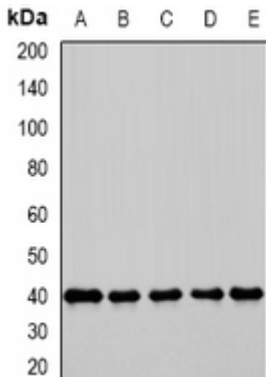
SwissProt: Q9BVC4/Q9DCJ1/Q9Z2K5

Purification: The antibody was purified by immunogen affinity chromatography.

Buffer: Liquid in 0.42% Potassium phosphate, 0.87% Sodium chloride, pH 7.3, 30% glycerol, and 0.01% sodium azide.

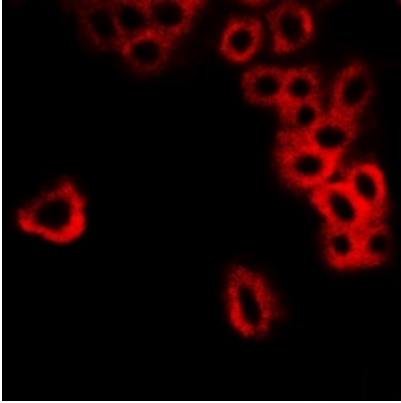
WB description:

Western blot analysis of GBL expression in K562 (A), HepG2 (B), COS7 (C), mouse testis (D), mouse spleen (E) whole cell lysates.



IF/ICC description:

Immunofluorescent analysis of GBL staining in MCF7 cells. Formalin-fixed cells were permeabilized with 0.1% Triton X-100 in TBS for 5-10 minutes and blocked with 3% BSA-PBS for 30 minutes at room temperature. Cells were probed with the primary antibody in



Storage:

Store at -20°C. Avoid repeated freeze / thaw cycles.