

Manufacturer/Supplier:

WUXI DONGLIN SCI&TECH DEVELOPMENT CO., LTD

Address: A1-203 Mingpin CityII, No.8 Xihudong Road, Liangxi District
Wuxi Jiangsu Province, China

TELE: 86-510-82732223

FAX: 86-510-82720101-8014

Web : www.dldevelop.com

Email: info@dldevelop.com.cn service@dldevelop.com.cn

Product name: Rabbit anti-SAPK2 Antibody

Catalog: DL96931A

Synonyms: PRKM11; SAPK2; SAPK2B; Mitogen-activated protein kinase 11; MAP kinase 11; MAPK 11; Mitogen-activated protein kinase p38 beta; MAP kinase p38 beta; p38b; Stress-activated protein kinase 2b; SAPK2b; p38-2

Immunogen: KLH-conjugated synthetic peptide of human SAPK2

Form: Liquid

Concentration: 1mg/mL

Size: 100 ul/50 ul

Host: Rabbit

Reactivity: Human, Mouse, Rat

Application: WB, IHC

Clonality: Polyclonal

Dilution: WB (1/500 - 1/2000),
IHC (1/50 - 1/100)

Entrez Gene: 5600/19094

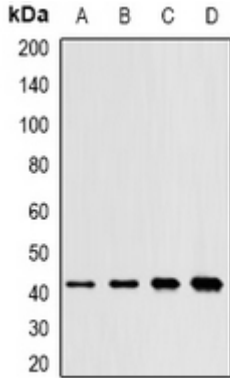
SwissProt: Q15759/Q9WUI1

Purification: The antibody was purified by immunogen affinity chromatography.

Buffer: Liquid in 0.42% Potassium phosphate, 0.87% Sodium chloride, pH 7.3, 30% glycerol, and 0.01% sodium azide.

WB description:

Western blot analysis of SAPK2 expression in SW620 (A), mouse kidney (B), mouse liver (C), rat brain (D) whole cell lysates.



IHC description:

Immunohistochemical analysis of SAPK2 staining in rat brain formalin fixed paraffin embedded tissue section. The section was pre-treated using heat mediated antigen retrieval with sodium citrate buffer (pH 6.0). The section was then incubated with the antibody at room temperature and detected using an HRP conjugated compact polymer system. DAB was used as the chromogen. The section was then counterstained with haematoxylin and mounted with DPX.

Storage:

Store at -20°C. Avoid repeated freeze / thaw cycles.