

Manufacturer/Supplier:

WUXI DONGLIN SCI&TECH DEVELOPMENT CO., LTD

Address: A1-203 Mingpin CityII, No.8 Xihudong Road, Liangxi District
Wuxi Jiangsu Province, China

TELE: 86-510-82732223

FAX: 86-510-82720101-8014

Web : www.dldevelop.com

Email: info@dldevelop.com.cn service@dldevelop.com.cn

Product name: Rabbit anti-IFIT3 Antibody

Catalog: DL96883A

Synonyms: CIG-49; IFI60; IFIT4; ISG60; Interferon-induced protein with tetratricopeptide repeats 3; IFIT-3; CIG49; ISG-60; Interferon-induced 60 kDa protein; IFI-60K; Interferon-induced protein with tetratricopeptide repeats 4; IFIT-4; Retinoic acid-induced gene G

Immunogen: KLH-conjugated synthetic peptide of human IFIT3

Form: Liquid

Concentration: 1mg/mL

Size: 100 ul/50 ul

Host: Rabbit

Reactivity: Human, Mouse

Application: WB, IHC

Clonality: Polyclonal

Dilution: WB (1/200 - 1/2000),
IHC (1/50 - 1/200)

Entrez Gene: 3437/15959

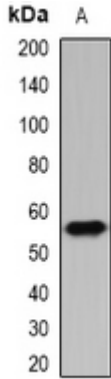
SwissProt: O14879/Q64345

Purification: The antibody was purified by immunogen affinity chromatography.

Buffer: Liquid in 0.42% Potassium phosphate, 0.87% Sodium chloride, pH 7.3, 30% glycerol, and 0.01% sodium azide.

WB description:

Western blot analysis of IFIT3 expression in HEK293T (A) whole cell lysates.



IHC description:

Immunohistochemical analysis of IFIT3 staining in human liver cancer formalin fixed paraffin embedded tissue section. The section was pre-treated using heat mediated antigen retrieval with sodium citrate buffer (pH 6.0). The section was then incubated with the antibody at room temperature and detected using an HRP conjugated compact polymer system. DAB was used as the chromogen. The section was then counterstained with haematoxylin and mounted with DPX.

Storage:

Store at -20°C. Avoid repeated freeze / thaw cycles.