

Manufacturer/Supplier:

WUXI DONGLIN SCI&TECH DEVELOPMENT CO., LTD

Address: A1-203 Mingpin CityII, No.8 Xihudong Road, Liangxi District
Wuxi Jiangsu Province, China

TELE: 86-510-82732223

FAX: 86-510-82720101-8014

Web : www.dldevelop.com

Email: info@dldevelop.com.cn service@dldevelop.com.cn

Product name: Rabbit anti-IDH1 Antibody

Catalog: DL96879A

Synonyms: PICD; Isocitrate dehydrogenase [NADP]
cytoplasmic; IDH; Cytosolic NADP-isocitrate
dehydrogenase; IDP; NADP(+)-specific ICDH;
Oxalosuccinate decarboxylase

Immunogen: Recombinant full length protein of human IDH1

Form: Liquid

Concentration: 1mg/mL

Size: 100 ul/50 ul

Host: Rabbit

Reactivity: Human, Mouse, Rat

Application: WB, IHC, IF/IC, IP,
ChIP

Clonality: Polyclonal

Dilution: WB (1/500 - 1/2000),

IHC (1/50 - 1/200), IF/IC (1/50 - 1/200), IP (1/50 - 1/200), ChIP (1/20 - 1/100)

Entrez Gene: 3417/15926/24479

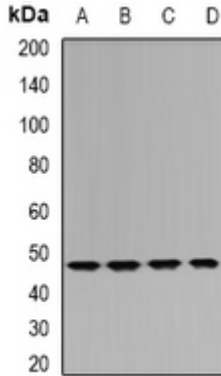
SwissProt: O75874/O88844/P41562

Purification: The antibody was purified by immunogen affinity chromatography.

Buffer: Liquid in 0.42% Potassium phosphate, 0.87% Sodium chloride, pH 7.3, 30% glycerol, and 0.01% sodium azide.

WB description:

Western blot analysis of IDH1 expression in A549 (A), Raji (B), mouse kidney (C), mouse liver (D) whole cell lysates.

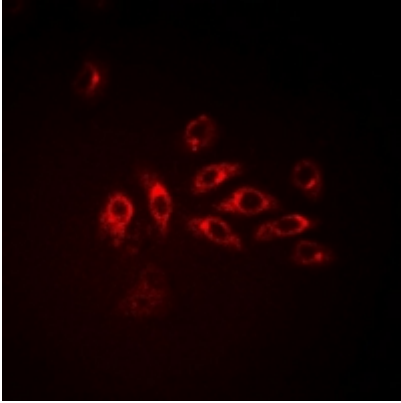


IHC description:

Immunohistochemical analysis of IDH1 staining in human colon cancer formalin fixed paraffin embedded tissue section. The section was pre-treated using heat mediated antigen retrieval with sodium citrate buffer (pH 6.0). The section was then incubated with the antibody at room temperature and detected using an HRP conjugated compact polymer system. DAB was used as the chromogen. The section was then counterstained with haematoxylin and mounted with DPX.

IF/ICC description:

Immunofluorescent analysis of IDH1 staining in A549 cells. Formalin-fixed cells were permeabilized with 0.1% Triton X-100 in TBS for 5-10 minutes and blocked with 3% BSA-PBS for 30 minutes at room temperature. Cells were probed with the primary antibody i



IP description:

ChIP description:

Storage:

Store at -20°C. Avoid repeated freeze / thaw cycles.