

Manufacturer/Supplier:

WUXI DONGLIN SCI&TECH DEVELOPMENT CO., LTD

Address: A1-203 Mingpin CityII, No.8 Xihudong Road, Liangxi District
Wuxi Jiangsu Province, China

TELE: 86-510-82732223

FAX: 86-510-82720101-8014

Web : www.dldevelop.com

Email: info@dldevelop.com.cn service@dldevelop.com.cn

Product name: Rabbit anti-TIM3 Antibody

Catalog: DL96861A

Synonyms: TIM3; TIMD3; Hepatitis A virus cellular receptor 2; HAVcr-2; T-cell immunoglobulin and mucin domain-containing protein 3; TIMD-3; T-cell immunoglobulin mucin receptor 3; TIM-3; T-cell membrane protein 3

Immunogen: KLH-conjugated synthetic peptide of human TIM3

Form: Liquid

Concentration: 1mg/mL

Size: 100 ul/50 ul

Host: Rabbit

Reactivity: Human, Mouse

Application: WB, IHC

Clonality: Polyclonal

Dilution: WB (1/500 - 1/1000),
IHC (1/50 - 1/200)

Entrez Gene: 84868/171285

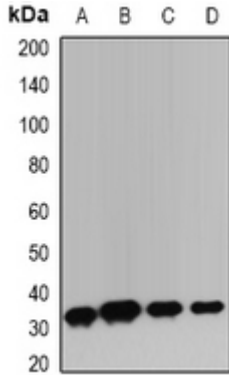
SwissProt: Q8TDQ0/Q8VIM0

Purification: The antibody was purified by immunogen affinity chromatography.

Buffer: Liquid in 0.42% Potassium phosphate, 0.87% Sodium chloride, pH 7.3, 30% glycerol, and 0.01% sodium azide.

WB description:

Western blot analysis of TIM3 expression in HepG2 (A), BT474 (B), mouse lung (C), mouse thymus (D) whole cell lysates.



IHC description:

Immunohistochemical analysis of TIM3 staining in human breast cancer formalin fixed paraffin embedded tissue section. The section was pre-treated using heat mediated antigen retrieval with sodium citrate buffer (pH 6.0). The section was then incubated with the antibody at room temperature and detected using an HRP conjugated compact polymer system. DAB was used as the chromogen. The section was then counterstained with haematoxylin and mounted with DPX.

Storage:

Store at -20°C. Avoid repeated freeze / thaw cycles.