

Manufacturer/Supplier:

WUXI DONGLIN SCI&TECH DEVELOPMENT CO., LTD

Address: A1-203 Mingpin CityII, No.8 Xihudong Road, Liangxi District
Wuxi Jiangsu Province, China

TELE: 86-510-82732223

FAX: 86-510-82720101-8014

Web : www.dldevelop.com

Email: info@dldevelop.com.cn service@dldevelop.com.cn

Product name: Rabbit anti-Granzyme B Antibody

Catalog: DL96859A

Synonyms: CGL1; CSPB; CTLA1; GRB; Granzyme B; C11;
CTLA-1; Cathepsin G-like 1; CTSG1; Cytotoxic
T-lymphocyte proteinase 2; Lymphocyte protease;
Fragmentin-2; Granzyme-2; Human lymphocyte
protein; HLP; SECT; T-cell serine protease 1-3E

Immunogen: Recombinant full length protein of human
Granzyme B

Form: Liquid

Concentration: 1mg/mL

Size: 100 ul/50 ul

Host: Rabbit

Reactivity: Human, Mouse

Application: WB, IF/IC

Clonality: Polyclonal

Dilution: WB (1/500 - 1/2000),
IF/IC (1/50 - 1/200)

Entrez Gene: 3002/14939

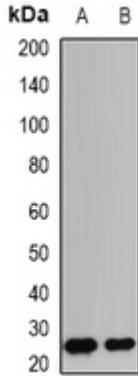
SwissProt: P10144/P04187

Purification: The antibody was purified by immunogen affinity chromatography.

Buffer: Liquid in 0.42% Potassium phosphate, 0.87% Sodium chloride, pH 7.3, 30% glycerol, and 0.01% sodium azide.

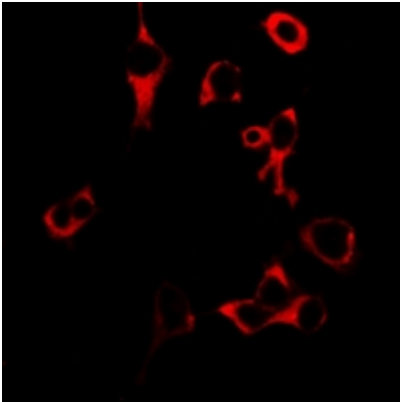
WB description:

Western blot analysis of Granzyme B expression in mouse spleen (A), mouse lung (B) whole cell lysates.



IF/ICC description:

Immunofluorescent analysis of Granzyme B staining in U2OS cells. Formalin-fixed cells were permeabilized with 0.1% Triton X-100 in TBS for 5-10 minutes and blocked with 3% BSA-PBS for 30 minutes at room temperature. Cells were probed with the primary anti



Storage:



Store at -20°C. Avoid repeated freeze / thaw cycles.