

**Manufacturer/Supplier:**

WUXI DONGLIN SCI&TECH DEVELOPMENT CO., LTD

**Address:** A1-203 Mingpin CityII, No.8 Xihudong Road, Liangxi District  
Wuxi Jiangsu Province, China

**TELE:** 86-510-82732223

**FAX:** 86-510-82720101-8014

**Web :** [www.dldevelop.com](http://www.dldevelop.com)

**Email:** [info@dldevelop.com.cn](mailto:info@dldevelop.com.cn)    [service@dldevelop.com.cn](mailto:service@dldevelop.com.cn)

**Product name:** Rabbit anti-EZH2 Antibody

**Catalog:** DL96814A

**Synonyms:** KMT6; Histone-lysine N-methyltransferase EZH2;  
ENX-1; Enhancer of zeste homolog 2; Lysine  
N-methyltransferase 6

**Immunogen:** Recombinant full length protein of human EZH2

**Form:** Liquid

**Concentration:** 1mg/mL

**Size:** 100 ul/50 ul

**Host:** Rabbit

**Reactivity:** Human, Mouse, Rat

**Application:** WB, IF/IC

**Clonality:** Polyclonal

**Dilution:** WB (1/500 - 1/2000),  
IF/IC (1/20 - 1/100)

**Entrez Gene:** 2146/14056

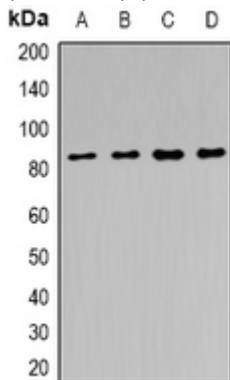
**SwissProt:** Q15910/Q61188

**Purification:** The antibody was purified by immunogen affinity chromatography.

**Buffer:** Liquid in 0.42% Potassium phosphate, 0.87% Sodium chloride, pH 7.3, 30% glycerol, and 0.01% sodium azide.

### WB description:

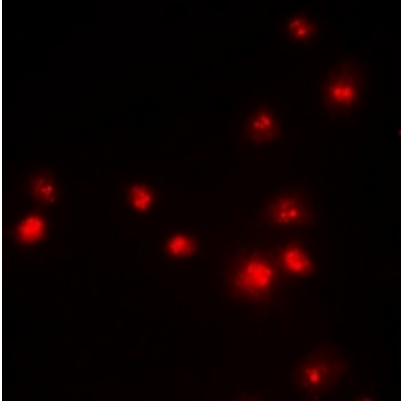
Western blot analysis of EZH2 expression in HL60 (A), SW620 (B), MCF7 (C), mouse ovary (D) whole cell lysates.



### IF/ICC description:

Immunofluorescent analysis of EZH2 staining in MCF7 cells.

Formalin-fixed cells were permeabilized with 0.1% Triton X-100 in TBS for 5-10 minutes and blocked with 3% BSA-PBS for 30 minutes at room temperature. Cells were probed with the primary antibody i

**Storage:**

Store at -20°C. Avoid repeated freeze / thaw cycles.