

Manufacturer/Supplier:

WUXI DONGLIN SCI&TECH DEVELOPMENT CO., LTD

Address: A1-203 Mingpin CityII, No.8 Xihudong Road, Liangxi District
Wuxi Jiangsu Province, China

TELE: 86-510-82732223

FAX: 86-510-82720101-8014

Web : www.dldevelop.com

Email: info@dldevelop.com.cn service@dldevelop.com.cn

Product name: Rabbit anti-Cytochrome P450 51A1 Antibody

Catalog: DL96788A

Synonyms: CYP51; Lanosterol 14-alpha demethylase; LDM;
CYPLI; Cytochrome P450 51A1; Cytochrome
P450-14DM; Cytochrome P45014DM; Cytochrome
P450LI; Sterol 14-alpha demethylase

Immunogen: Recombinant full length protein of human
Cytochrome P450 51A1

Form: Liquid

Concentration: 1mg/mL

Size: 100 ul/50 ul

Host: Rabbit

Reactivity: Human, Mouse, Rat

Application: WB, IHC, IF/IC

Clonality: Polyclonal

Dilution: WB (1/500 - 1/2000),
IHC (1/50 - 1/200), IF/IC (1/20 -
1/100)

Entrez Gene: 1595/13121/25427

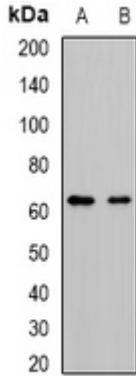
SwissProt: Q16850/Q8K0C4/Q64654

Purification: The antibody was purified by immunogen affinity chromatography.

Buffer: Liquid in 0.42% Potassium phosphate, 0.87% Sodium chloride, pH 7.3, 30% glycerol, and 0.01% sodium azide.

WB description:

Western blot analysis of Cytochrome P450 51A1 expression in mouse kidney (A), rat liver (B) whole cell lysates.

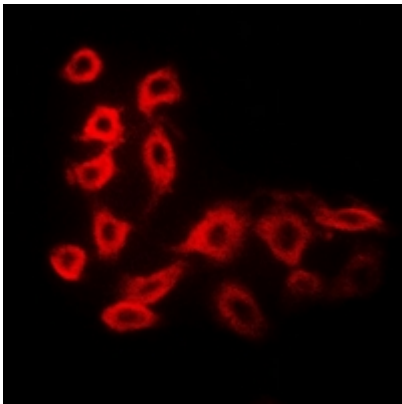


IHC description:

Immunohistochemical analysis of Cytochrome P450 51A1 staining in human prostate cancer formalin fixed paraffin embedded tissue section. The section was pre-treated using heat mediated antigen retrieval with sodium citrate buffer (pH 6.0). The section was then incubated with the antibody at room temperature and detected using an HRP conjugated compact polymer system. DAB was used as the chromogen. The section was then counterstained with haematoxylin and mounted with DPX.

IF/ICC description:

Immunofluorescent analysis of Cytochrome P450 51A1 staining in MCF7 cells. Formalin-fixed cells were permeabilized with 0.1% Triton X-100 in TBS for 5-10 minutes and blocked with 3% BSA-PBS for 30 minutes at room temperature. Cells were probed with the pr



Storage:

Store at -20°C. Avoid repeated freeze / thaw cycles.