

**Manufacturer/Supplier:**

WUXI DONGLIN SCI&TECH DEVELOPMENT CO., LTD

**Address:** A1-203 Mingpin CityII, No.8 Xihudong Road, Liangxi District  
Wuxi Jiangsu Province, China

**TELE:** 86-510-82732223

**FAX:** 86-510-82720101-8014

**Web :** [www.dldevelop.com](http://www.dldevelop.com)

**Email:** [info@dldevelop.com.cn](mailto:info@dldevelop.com.cn)    [service@dldevelop.com.cn](mailto:service@dldevelop.com.cn)

**Product name:** Rabbit anti-Cullin 5 Antibody

**Catalog:** DL96783A

**Synonyms:** VACM1; Cullin-5; CUL-5; Vasopressin-activated calcium-mobilizing receptor 1; VACM-1

**Immunogen:** Recombinant full length protein of human Cullin 5

**Form:** Liquid

**Concentration:** 1mg/mL

**Size:** 100 ul/50 ul

**Host:** Rabbit

**Reactivity:** Human, Mouse, Rat

**Application:** WB, IF/IC

**Clonality:** Polyclonal

**Dilution:** WB (1/500 - 1/2000),  
IF/IC (1/50 - 1/200)

**Entrez Gene:** 8065/75717/64624

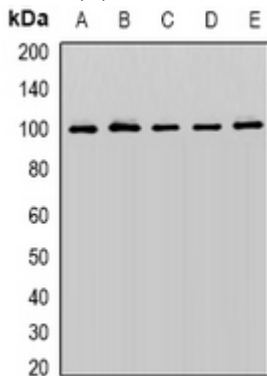
**SwissProt:** Q93034/Q9D5V5/Q9JJ31

**Purification:** The antibody was purified by immunogen affinity chromatography.

**Buffer:** Liquid in 0.42% Potassium phosphate, 0.87% Sodium chloride, pH 7.3, 30% glycerol, and 0.01% sodium azide.

### WB description:

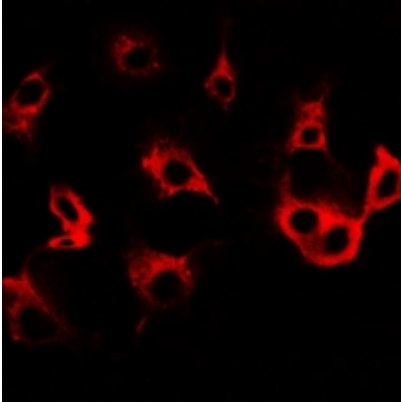
Western blot analysis of Cullin 5 expression in K562 (A), PC3 (B), SW480 (C), mouse brain (D), mouse heart (E) whole cell lysates.



### IF/ICC description:

Immunofluorescent analysis of Cullin 5 staining in SW480 cells. Formalin-fixed cells were permeabilized with 0.1% Triton X-100 in

TBS for 5-10 minutes and blocked with 3% BSA-PBS for 30 minutes at room temperature. Cells were probed with the primary antib



**Storage:**

Store at -20°C. Avoid repeated freeze / thaw cycles.