

Manufacturer/Supplier:

WUXI DONGLIN SCI&TECH DEVELOPMENT CO., LTD

Address: A1-203 Mingpin CityII, No.8 Xihudong Road, Liangxi District
Wuxi Jiangsu Province, China

TELE: 86-510-82732223

FAX: 86-510-82720101-8014

Web : www.dldevelop.com

Email: info@dldevelop.com.cn service@dldevelop.com.cn

Product name: Rabbit anti-Clathrin Heavy Chain Antibody

Catalog: DL96766A

Synonyms: CLH17; CLTCL2; KIAA0034; Clathrin heavy chain
1; Clathrin heavy chain on chromosome 17;
CLH-17

Immunogen: KLH-conjugated synthetic peptide of human
Clathrin Heavy Chain

Form: Liquid

Concentration: 1mg/mL

Size: 100 ul/50 ul

Host: Rabbit

Reactivity: Human, Mouse, Rat

Application: WB, IHC

Clonality: Polyclonal

Dilution: WB (1/500 - 1/2000),

IHC (1/50 - 1/100)

Entrez Gene: 1213/67300/54241

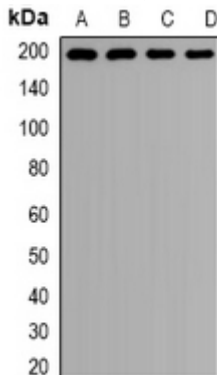
SwissProt: Q00610/Q68FD5/P11442

Purification: The antibody was purified by immunogen affinity chromatography.

Buffer: Liquid in 0.42% Potassium phosphate, 0.87% Sodium chloride, pH 7.3, 30% glycerol, and 0.01% sodium azide.

WB description:

Western blot analysis of Clathrin Heavy Chain expression in Hela (A), MCF7 (B), mouse lung (C), rat brain (D) whole cell lysates.



IHC description:

Immunohistochemical analysis of Clathrin Heavy Chain staining in rat kidney formalin fixed paraffin embedded tissue section. The section was pre-treated using heat mediated antigen retrieval with sodium citrate buffer (pH 6.0). The section was then incubated with the antibody at room temperature and detected using an HRP conjugated compact polymer system. DAB was used as the chromogen. The section was then counterstained with haematoxylin and mounted with DPX.

Storage:

Store at -20°C. Avoid repeated freeze / thaw cycles.