

Manufacturer/Supplier:

WUXI DONGLIN SCI&TECH DEVELOPMENT CO., LTD

Address: A1-203 Mingpin CityII, No.8 Xihudong Road, Liangxi District
Wuxi Jiangsu Province, China

TELE: 86-510-82732223

FAX: 86-510-82720101-8014

Web : www.dldevelop.com

Email: info@dldevelop.com.cn service@dldevelop.com.cn

Product name: Rabbit anti-CDK20 Antibody

Catalog: DL96748A

Synonyms: CCRK; CDCH; Cyclin-dependent kinase 20;
CDK-activating kinase p42; CAK-kinase p42; Cell
cycle-related kinase; Cell division protein kinase 20;
Cyclin-dependent protein kinase H;
Cyclin-kinase-activating kinase p42

Immunogen: KLH-conjugated synthetic peptide of human
CDK20

Form: Liquid

Concentration: 1mg/mL

Size: 100 ul/50 ul

Host: Rabbit

Reactivity: Human, Mouse, Rat

Application: WB, IHC

Clonality: Polyclonal

Dilution: WB (1/500 - 1/1000),
IHC (1/50 - 1/200)

Entrez Gene: 23552/105278/364666

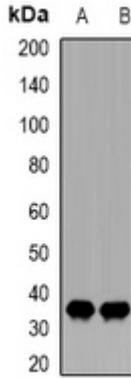
SwissProt: Q8IZL9/Q9JHU3/Q4KM34

Purification: The antibody was purified by immunogen affinity chromatography.

Buffer: Liquid in 0.42% Potassium phosphate, 0.87% Sodium chloride, pH 7.3, 30% glycerol, and 0.01% sodium azide.

WB description:

Western blot analysis of CDK20 expression in MCF7 (A), THP1 (B) whole cell lysates.



IHC description:

Immunohistochemical analysis of CDK20 staining in human breast cancer formalin fixed paraffin embedded tissue section. The section was pre-treated using heat mediated antigen retrieval with sodium citrate buffer (pH 6.0). The section was then incubated with the antibody at room temperature and detected using an HRP conjugated compact polymer system. DAB was used as the chromogen. The section was then counterstained with haematoxylin and mounted with DPX.

Storage:

Store at -20°C. Avoid repeated freeze / thaw cycles.