

**Manufacturer/Supplier:**

WUXI DONGLIN SCI&TECH DEVELOPMENT CO., LTD

**Address:** A1-203 Mingpin CityII, No.8 Xihudong Road, Liangxi District  
Wuxi Jiangsu Province, China

**TELE:** 86-510-82732223

**FAX:** 86-510-82720101-8014

**Web :** [www.dldevelop.com](http://www.dldevelop.com)

**Email:** [info@dldevelop.com.cn](mailto:info@dldevelop.com.cn)    [service@dldevelop.com.cn](mailto:service@dldevelop.com.cn)

**Product name:** Rabbit anti-Beclin-1 Antibody

**Catalog:** DL96714A

**Synonyms:** GT197; Beclin-1; Coiled-coil myosin-like  
BCL2-interacting protein; Protein GT197

**Immunogen:** Recombinant full length protein of human Beclin-1

**Form:** Liquid

**Concentration:** 1mg/mL

**Size:** 100 ul/50 ul

**Host:** Rabbit

**Reactivity:** Human, Mouse, Rat

**Application:** WB, IHC, IF/IC, IP

**Clonality:** Polyclonal

**Dilution:** WB (1/500 - 1/2000),  
IHC (1/50 - 1/200), IF/IC (1/50 -  
1/200), IP (1/20 - 1/50)

**Entrez Gene:** 8678/56208/114558

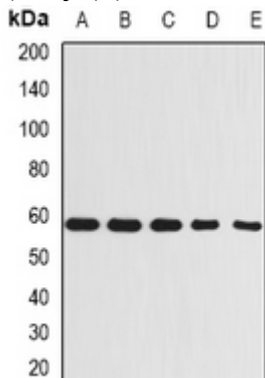
**SwissProt:** Q14457/O88597/Q91XJ1

**Purification:** The antibody was purified by immunogen affinity chromatography.

**Buffer:** Liquid in 0.42% Potassium phosphate, 0.87% Sodium chloride, pH 7.3, 30% glycerol, and 0.01% sodium azide.

### WB description:

Western blot analysis of Beclin-1 expression in A431 (A), MCF7 (B), Raji (C), mouse kidney (D), rat brain (E) whole cell lysates.



### IHC description:

Immunohistochemical analysis of Beclin-1 staining in human liver

cancer formalin fixed paraffin embedded tissue section. The section was pre-treated using heat mediated antigen retrieval with sodium citrate buffer (pH 6.0). The section was then incubated with the antibody at room temperature and detected using an HRP conjugated compact polymer system. DAB was used as the chromogen. The section was then counterstained with haematoxylin and mounted with DPX.

### **IF/ICC description:**

### **IP description:**

### **Storage:**

Store at -20°C. Avoid repeated freeze / thaw cycles.