

**Manufacturer/Supplier:**

WUXI DONGLIN SCI&TECH DEVELOPMENT CO., LTD

**Address:** A1-203 Mingpin CityII, No.8 Xihudong Road, Liangxi District  
Wuxi Jiangsu Province, China

**TELE:** 86-510-82732223

**FAX:** 86-510-82720101-8014

**Web :** [www.dldevelop.com](http://www.dldevelop.com)

**Email:** [info@dldevelop.com.cn](mailto:info@dldevelop.com.cn)    [service@dldevelop.com.cn](mailto:service@dldevelop.com.cn)

**Product name:** Rabbit anti-GrpEL2 Antibody

**Catalog:** DL96632A

**Synonyms:** GrpE protein homolog 2, mitochondrial; Mt-GrpE2

**Immunogen:** Recombinant full length protein of human GrpEL2

**Form:** Liquid

**Concentration:** 1mg/mL

**Size:** 100 ul/50 ul

**Host:** Rabbit

**Reactivity:** Human, Mouse

**Application:** WB, IHC

**Clonality:** Polyclonal

**Dilution:** WB (1/500 - 1/2000),  
IHC (1/50 - 1/100)

**Entrez Gene:** 134266/17714

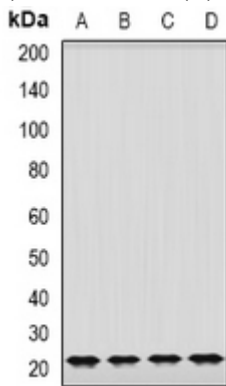
**SwissProt:** Q8TAA5/O88396

**Purification:** The antibody was purified by immunogen affinity chromatography.

**Buffer:** Liquid in 0.42% Potassium phosphate, 0.87% Sodium chloride, pH 7.3, 30% glycerol, and 0.01% sodium azide.

**WB description:**

Western blot analysis of GrpEL2 expression in K562 (A), MCF7 (B), mouse brain (C), mouse lung (D) whole cell lysates.



**IHC description:**

Immunohistochemical analysis of GrpEL2 staining in mouse brain formalin fixed paraffin embedded tissue section. The section was

pre-treated using heat mediated antigen retrieval with sodium citrate buffer (pH 6.0). The section was then incubated with the antibody at room temperature and detected using an HRP conjugated compact polymer system. DAB was used as the chromogen. The section was then counterstained with haematoxylin and mounted with DPX.

### Storage:

Store at -20°C. Avoid repeated freeze / thaw cycles.