

**Manufacturer/Supplier:**

WUXI DONGLIN SCI&TECH DEVELOPMENT CO., LTD

**Address:** A1-203 Mingpin CityII, No.8 Xihudong Road, Liangxi District  
Wuxi Jiangsu Province, China

TELE: 86-510-82732223

FAX: 86-510-82720101-8014

**Web :** [www.dldevelop.com](http://www.dldevelop.com)

Email: [info@dldevelop.com.cn](mailto:info@dldevelop.com.cn) [service@dldevelop.com.cn](mailto:service@dldevelop.com.cn)

**Product name:** Rabbit anti-AP1-mu-2 Antibody

**Catalog:** DL96631A

**Synonyms:** AP-1 complex subunit mu-2; AP-mu chain family member mu1B; Adaptor protein complex AP-1 subunit mu-2; Adaptor-related protein complex 1 subunit mu-2; Clathrin assembly protein complex 1 mu-2 medium chain 2; Golgi adaptor HA1/AP1 adaptin mu-2 subunit; Mu-a

**Immunogen:** Recombinant full length protein of human AP1-mu-2

**Form:** Liquid

**Concentration:** 1mg/mL

**Size:** 100 ul/50 ul

**Host:** Rabbit

**Reactivity:** Human, Mouse

**Application:** WB, IHC

**Clonality:** Polyclonal

**Dilution:** WB (1/500 - 1/2000),  
IHC (1/50 - 1/100)

**Entrez Gene:** 10053/11768

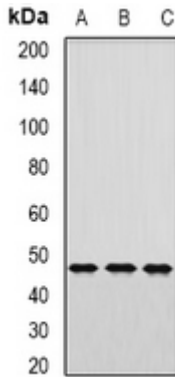
**SwissProt:** Q9Y6Q5/Q9WVP1

**Purification:** The antibody was purified by immunogen affinity chromatography.

**Buffer:** Liquid in 0.42% Potassium phosphate, 0.87% Sodium chloride, pH 7.3, 30% glycerol, and 0.01% sodium azide.

**WB description:**

Western blot analysis of AP1-mu-2 expression in HepG2 (A), mouse kidney (B), mouse lung (C) whole cell lysates.



### IHC description:

Immunohistochemical analysis of AP1-mu-2 staining in human liver cancer formalin fixed paraffin embedded tissue section. The section was pre-treated using heat mediated antigen retrieval with sodium citrate buffer (pH 6.0). The section was then incubated with the antibody at room temperature and detected using an HRP conjugated compact polymer system. DAB was used as the chromogen. The section was then counterstained with haematoxylin and mounted with DPX.

### Storage:

Store at -20°C. Avoid repeated freeze / thaw cycles.