

Manufacturer/Supplier:

WUXI DONGLIN SCI&TECH DEVELOPMENT CO., LTD

Address: A1-203 Mingpin CityII, No.8 Xihudong Road, Liangxi District
Wuxi Jiangsu Province, China

TELE: 86-510-82732223

FAX: 86-510-82720101-8014

Web : www.dldevelop.com

Email: info@dldevelop.com.cn service@dldevelop.com.cn

Product name: Rabbit anti-KCTD15 Antibody

Catalog: DL96620A

Synonyms: BTB/POZ domain-containing protein KCTD15;
Potassium channel tetramerization
domain-containing protein 15

Immunogen: Recombinant full length protein of human KCTD15

Form: Liquid

Concentration: 1mg/mL

Size: 100 ul/50 ul

Host: Rabbit

Reactivity: Human, Mouse, Rat

Application: WB, IHC

Clonality: Polyclonal

Dilution: WB (1/500 - 1/2000),
IHC (1/50 - 1/100)

Entrez Gene: 79047/233107

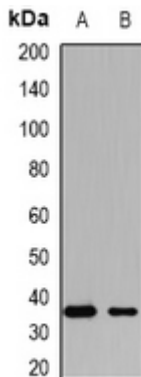
SwissProt: Q96SI1/Q8K0E1

Purification: The antibody was purified by immunogen affinity chromatography.

Buffer: Liquid in 0.42% Potassium phosphate, 0.87% Sodium chloride, pH 7.3, 30% glycerol, and 0.01% sodium azide.

WB description:

Western blot analysis of KCTD15 expression in HEK293T (A), mouse skeletal muscles (B) whole cell lysates.



IHC description:

Immunohistochemical analysis of KCTD15 staining in mouse lung

formalin fixed paraffin embedded tissue section. The section was pre-treated using heat mediated antigen retrieval with sodium citrate buffer (pH 6.0). The section was then incubated with the antibody at room temperature and detected using an HRP conjugated compact polymer system. DAB was used as the chromogen. The section was then counterstained with haematoxylin and mounted with DPX.

Storage:

Store at -20°C. Avoid repeated freeze / thaw cycles.