

Manufacturer/Supplier:

WUXI DONGLIN SCI&TECH DEVELOPMENT CO., LTD

Address: A1-203 Mingpin CityII, No.8 Xihudong Road, Liangxi District
Wuxi Jiangsu Province, China

TELE: 86-510-82732223

FAX: 86-510-82720101-8014

Web : www.dldevelop.com

Email: info@dldevelop.com.cn service@dldevelop.com.cn

Product name: Rabbit anti-SNAP-alpha Antibody

Catalog: DL96559A

Synonyms: SNAPA; Alpha-soluble NSF attachment protein;
SNAP-alpha; N-ethylmaleimide-sensitive factor
attachment protein alpha

Immunogen: Recombinant full length protein of human
SNAP-alpha

Form: Liquid

Concentration: 1mg/mL

Size: 100 ul/50 ul

Host: Rabbit

Reactivity: Human, Mouse, Rat

Application: WB

Clonality: Polyclonal

Dilution: WB (1/500 - 1/2000)

Entrez Gene: 8775/108124/140673

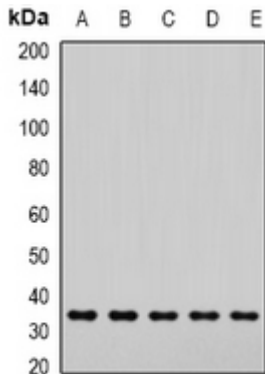
SwissProt: P54920/Q9DB05/P54921

Purification: The antibody was purified by immunogen affinity chromatography.

Buffer: Liquid in 0.42% Potassium phosphate, 0.87% Sodium chloride, pH 7.3, 30% glycerol, and 0.01% sodium azide.

WB description:

Western blot analysis of SNAP-alpha expression in Hela (A), Jurkat (B), mouse brain (C), mouse lung (D), rat liver (E) whole cell lysates.



Storage:

Store at -20°C. Avoid repeated freeze / thaw cycles.