

Manufacturer/Supplier:

WUXI DONGLIN SCI&TECH DEVELOPMENT CO., LTD

Address: A1-203 Mingpin CityII, No.8 Xihudong Road, Liangxi District
Wuxi Jiangsu Province, China

TELE: 86-510-82732223

FAX: 86-510-82720101-8014

Web : www.dldevelop.com

Email: info@dldevelop.com.cn service@dldevelop.com.cn

Product name: Rabbit anti-NSD2 Antibody

Catalog: DL96556A

Synonyms: KIAA1090; MMSET; NSD2; TRX5; Histone-lysine N-methyltransferase NSD2; Multiple myeloma SET domain-containing protein; MMSET; Nuclear SET domain-containing protein 2; NSD2; Protein trithorax-5; Wolf-Hirschhorn syndrome candidate 1 protein; WHSC1

Immunogen: Recombinant full length protein of human NSD2

Form: Liquid

Concentration: 1mg/mL

Size: 100 ul/50 ul

Host: Rabbit

Reactivity: Human, Mouse

Application: WB, IHC

Clonality: Polyclonal

Dilution: WB (1/500 - 1/2000),
IHC (1/50 - 1/200)

Entrez Gene: 7468/107823

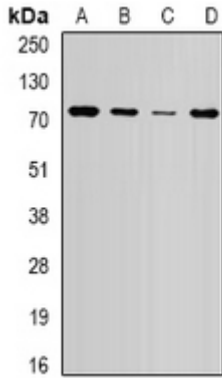
SwissProt: O96028/Q8BVE8

Purification: The antibody was purified by immunogen affinity chromatography.

Buffer: Liquid in 0.42% Potassium phosphate, 0.87% Sodium chloride, pH 7.3, 30% glycerol, and 0.01% sodium azide.

WB description:

Western blot analysis of NSD2 expression in HepG2 (A), SW620 (B), mouse brain (C), mouse spleen (D) whole cell lysates.



IHC description:

Immunohistochemical analysis of NSD2 staining in mouse lung formalin fixed paraffin embedded tissue section. The section was pre-treated using heat mediated antigen retrieval with sodium citrate buffer (pH 6.0). The section was then incubated with the antibody at room temperature and detected using an HRP conjugated compact polymer system. DAB was used as the chromogen. The section was then counterstained with haematoxylin and mounted with DPX.

Storage:

Store at -20°C. Avoid repeated freeze / thaw cycles.