

Manufacturer/Supplier:

WUXI DONGLIN SCI&TECH DEVELOPMENT CO., LTD

Address: A1-203 Mingpin CityII, No.8 Xihudong Road, Liangxi District
Wuxi Jiangsu Province, China

TELE: 86-510-82732223

FAX: 86-510-82720101-8014

Web : www.dldevelop.com

Email: info@dldevelop.com.cn service@dldevelop.com.cn

Product name: Rabbit anti-Caprin1 Antibody

Catalog: DL96548A

Synonyms: GPIAP1; GPIP137; M11S1; RNG105; Caprin-1;
Cell cycle-associated protein 1; Cytoplasmic
activation- and proliferation-associated protein 1;
GPI-anchored membrane protein 1; GPI-anchored
protein p137; GPI-p137; p137GPI; Membrane
component chromosome 11 surf

Immunogen: Recombinant full length protein of human Caprin1

Form: Liquid

Concentration: 1mg/mL

Size: 100 ul/50 ul

Host: Rabbit

Reactivity: Human, Mouse, Rat

Application: WB

Clonality: Polyclonal

Dilution: WB (1/500 - 1/2000)

Entrez Gene: 4076/53872/362173

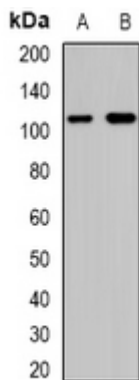
SwissProt: Q14444/Q60865/Q5M9G3

Purification: The antibody was purified by immunogen affinity chromatography.

Buffer: Liquid in 0.42% Potassium phosphate, 0.87% Sodium chloride, pH 7.3, 30% glycerol, and 0.01% sodium azide.

WB description:

Western blot analysis of Caprin1 expression in Hela (A), Jurkat (B) whole cell lysates.

**Storage:**

Store at -20°C. Avoid repeated freeze / thaw cycles.