

Manufacturer/Supplier:

WUXI DONGLIN SCI&TECH DEVELOPMENT CO., LTD

Address: A1-203 Mingpin CityII, No.8 Xihudong Road, Liangxi District
Wuxi Jiangsu Province, China

TELE: 86-510-82732223

FAX: 86-510-82720101-8014

Web : www.dldevelop.com

Email: info@dldevelop.com.cn service@dldevelop.com.cn

Product name: Rabbit anti-WISP2 Antibody

Catalog: DL96463A

Synonyms: CCN5; CT58; CTGFL; WNT1-inducible-signaling pathway protein 2; WISP-2; CCN family member 5; Connective tissue growth factor-like protein; CTGF-L; Connective tissue growth factor-related protein 58

Immunogen: Recombinant full length protein of human WISP2

Form: Liquid

Concentration: 1mg/mL

Size: 100 ul/50 ul

Host: Rabbit

Reactivity: Human, Mouse

Application: WB

Clonality: Polyclonal

Dilution: WB (1/500 - 1/2000)

Entrez Gene: 8839/22403

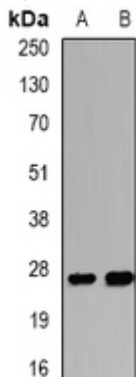
SwissProt: O76076/Q9Z0G4

Purification: The antibody was purified by immunogen affinity chromatography.

Buffer: Liquid in 0.42% Potassium phosphate, 0.87% Sodium chloride, pH 7.3, 30% glycerol, and 0.01% sodium azide.

WB description:

Western blot analysis of WISP2 expression in Hela (A), mouse lung (B) whole cell lysates.



Storage:

Store at -20°C. Avoid repeated freeze / thaw cycles.