

**Manufacturer/Supplier:**

WUXI DONGLIN SCI&TECH DEVELOPMENT CO., LTD

**Address:** A1-203 Mingpin CityII, No.8 Xihudong Road, Liangxi District  
Wuxi Jiangsu Province, China

**TELE:** 86-510-82732223

**FAX:** 86-510-82720101-8014

**Web :** [www.dldevelop.com](http://www.dldevelop.com)

**Email:** [info@dldevelop.com.cn](mailto:info@dldevelop.com.cn)    [service@dldevelop.com.cn](mailto:service@dldevelop.com.cn)

**Product name:** Rabbit anti-Deltex-2 Antibody

**Catalog:** DL96452A

**Synonyms:** KIAA1528; RNF58; Probable E3 ubiquitin-protein  
ligase DTX2; Protein deltex-2; Deltex2; hDTX2;  
RING finger protein 58

**Immunogen:** Recombinant full length protein of human Deltex-2

**Form:** Liquid

**Concentration:** 1mg/mL

**Size:** 100 ul/50 ul

**Host:** Rabbit

**Reactivity:** Human, Mouse, Rat

**Application:** WB, IHC

**Clonality:** Polyclonal

**Dilution:** WB (1/500 - 1/2000),  
IHC (1/50 - 1/200)

**Entrez Gene:** 113878/74198

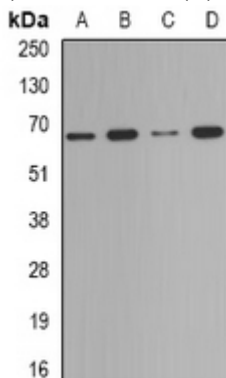
**SwissProt:** Q86UW9/Q8R3P2

**Purification:** The antibody was purified by immunogen affinity chromatography.

**Buffer:** Liquid in 0.42% Potassium phosphate, 0.87% Sodium chloride, pH 7.3, 30% glycerol, and 0.01% sodium azide.

### WB description:

Western blot analysis of Deltex-2 expression in Jurkat (A), HepG2 (B), mouse testis (C), mouse spleen (D) whole cell lysates.



### IHC description:

Immunohistochemical analysis of Deltex-2 staining in human

kidney formalin fixed paraffin embedded tissue section. The section was pre-treated using heat mediated antigen retrieval with sodium citrate buffer (pH 6.0). The section was then incubated with the antibody at room temperature and detected using an HRP conjugated compact polymer system. DAB was used as the chromogen. The section was then counterstained with haematoxylin and mounted with DPX.

### Storage:

Store at -20°C. Avoid repeated freeze / thaw cycles.