

Manufacturer/Supplier:

WUXI DONGLIN SCI&TECH DEVELOPMENT CO., LTD

Address: A1-203 Mingpin CityII, No.8 Xihudong Road, Liangxi District
Wuxi Jiangsu Province, China

TELE: 86-510-82732223

FAX: 86-510-82720101-8014

Web : www.dldevelop.com

Email: info@dldevelop.com.cn service@dldevelop.com.cn

Product name: Rabbit anti-ERGIC2 Antibody

Catalog: DL96448A

Synonyms: ERV41; PTX1; Endoplasmic reticulum-Golgi
intermediate compartment protein 2

Immunogen: Recombinant full length protein of human ERGIC2

Form: Liquid

Concentration: 1mg/mL

Size: 100 ul/50 ul

Host: Rabbit

Reactivity: Human, Mouse

Application: WB, IHC

Clonality: Polyclonal

Dilution: WB (1/500 - 1/2000),
IHC (1/50 - 1/200)

Entrez Gene: 51290/67456

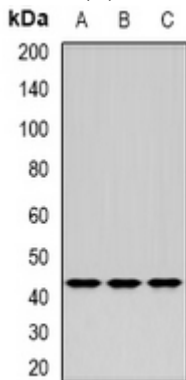
SwissProt: Q96RQ1/Q9CR89

Purification: The antibody was purified by immunogen affinity chromatography.

Buffer: Liquid in 0.42% Potassium phosphate, 0.87% Sodium chloride, pH 7.3, 30% glycerol, and 0.01% sodium azide.

WB description:

Western blot analysis of ERGIC2 expression in HepG2 (A), SKOV3 (B), mouse liver (C) whole cell lysates.



IHC description:

Immunohistochemical analysis of ERGIC2 staining in mouse kidney formalin fixed paraffin embedded tissue section. The section was

pre-treated using heat mediated antigen retrieval with sodium citrate buffer (pH 6.0). The section was then incubated with the antibody at room temperature and detected using an HRP conjugated compact polymer system. DAB was used as the chromogen. The section was then counterstained with haematoxylin and mounted with DPX.

Storage:

Store at -20°C. Avoid repeated freeze / thaw cycles.