

Manufacturer/Supplier:

WUXI DONGLIN SCI&TECH DEVELOPMENT CO., LTD

Address: A1-203 Mingpin CityII, No.8 Xihudong Road, Liangxi District
Wuxi Jiangsu Province, China

TELE: 86-510-82732223

FAX: 86-510-82720101-8014

Web : www.dldevelop.com

Email: info@dldevelop.com.cn service@dldevelop.com.cn

Product name: Rabbit anti-Pr-Set7 Antibody

Catalog: DL96430A

Synonyms: KMT5A; PRSET7; SET07; SET8; N-lysine methyltransferase SETD8; H4-K20-HMTase SETD8; Histone-lysine N-methyltransferase SETD8; Lysine N-methyltransferase 5A; PR/SET domain-containing protein 07; PR-Set7; PR/SET07; SET domain-containing protein 8

Immunogen: Recombinant full length protein of human Pr-Set7

Form: Liquid

Concentration: 1mg/mL

Size: 100 ul/50 ul

Host: Rabbit

Reactivity: Human, Rat

Application: WB, IF/IC

Clonality: Polyclonal

Dilution: WB (1/500 - 1/2000),
IF/IC (1/50 - 1/100)

Entrez Gene: 387893

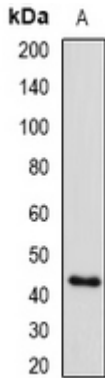
SwissProt: Q9NQR1

Purification: The antibody was purified by immunogen affinity chromatography.

Buffer: Liquid in 0.42% Potassium phosphate, 0.87% Sodium chloride, pH 7.3, 30% glycerol, and 0.01% sodium azide.

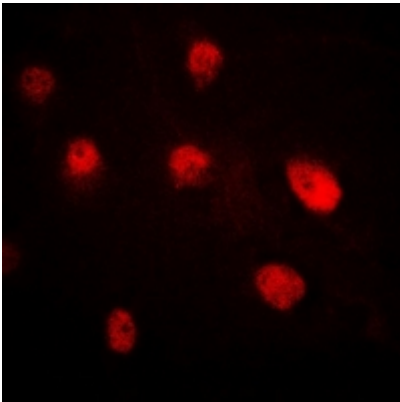
WB description:

Western blot analysis of Pr-Set7 expression in HEK293T (A) whole cell lysates.



IF/ICC description:

Immunofluorescent analysis of Pr-Set7 staining in MCF7 cells. Formalin-fixed cells were permeabilized with 0.1% Triton X-100 in TBS for 5-10 minutes and blocked with 3% BSA-PBS for 30 minutes at room temperature. Cells were probed with the primary antibody



Storage:



Store at -20°C. Avoid repeated freeze / thaw cycles.