

Manufacturer/Supplier:

WUXI DONGLIN SCI&TECH DEVELOPMENT CO., LTD

Address: A1-203 Mingpin CityII, No.8 Xihudong Road, Liangxi District
Wuxi Jiangsu Province, China

TELE: 86-510-82732223

FAX: 86-510-82720101-8014

Web : www.dldevelop.com

Email: info@dldevelop.com.cn service@dldevelop.com.cn

Product name: Rabbit anti-Hippi Antibody

Catalog: DL96410A

Synonyms: DERP8; ESRRBL1; HIPPI; Intraflagellar transport protein 57 homolog; Dermal papilla-derived protein 8; Estrogen-related receptor beta-like protein 1; HIP1-interacting protein; MHS4R2

Immunogen: Recombinant full length protein of human Hippi

Form: Liquid

Concentration: 1mg/mL

Size: 100 ul/50 ul

Host: Rabbit

Reactivity: Human

Application: WB

Clonality: Polyclonal

Dilution: WB (1/500 - 1/2000)

Entrez Gene: 55081

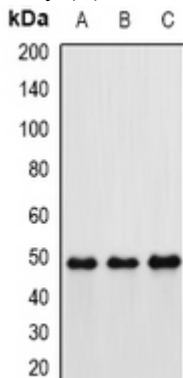
SwissProt: Q9NWB7

Purification: The antibody was purified by immunogen affinity chromatography.

Buffer: Liquid in 0.42% Potassium phosphate, 0.87% Sodium chloride, pH 7.3, 30% glycerol, and 0.01% sodium azide.

WB description:

Western blot analysis of Hipp1 expression in MCF7 (A), mouse kidney (B), rat lung (C) whole cell lysates.



Storage:



Store at -20°C. Avoid repeated freeze / thaw cycles.