

**Manufacturer/Supplier:**

WUXI DONGLIN SCI&TECH DEVELOPMENT CO., LTD

**Address:** A1-203 Mingpin CityII, No.8 Xihudong Road, Liangxi District  
Wuxi Jiangsu Province, China

TELE: 86-510-82732223

FAX: 86-510-82720101-8014

**Web :** [www.dldevelop.com](http://www.dldevelop.com)

Email: [info@dldevelop.com.cn](mailto:info@dldevelop.com.cn) [service@dldevelop.com.cn](mailto:service@dldevelop.com.cn)

**Product name:** Rabbit anti-ERp5 Antibody

**Catalog:** DL96389A

**Synonyms:** ERP5; P5; TXNDC7; Protein disulfide-isomerase A6; Endoplasmic reticulum protein 5; ER protein 5; ERp5; Protein disulfide isomerase P5; Thioredoxin domain-containing protein 7

**Immunogen:** Recombinant full length protein of human ERp5

**Form:** Liquid

**Concentration:** 1mg/mL

**Size:** 100 ul/50 ul

**Host:** Rabbit

**Reactivity:** Human, Mouse, Rat

**Application:** WB, IF/IC

**Clonality:** Polyclonal

**Dilution:** WB (1/500 - 1/2000),

IF/IC (1/50 - 1/100)

**Entrez Gene:** 10130/71853/286906

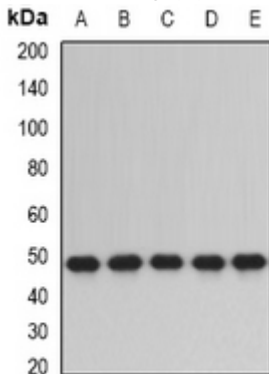
**SwissProt:** Q15084/Q922R8/Q63081

**Purification:** The antibody was purified by immunogen affinity chromatography.

**Buffer:** Liquid in 0.42% Potassium phosphate, 0.87% Sodium chloride, pH 7.3, 30% glycerol, and 0.01% sodium azide.

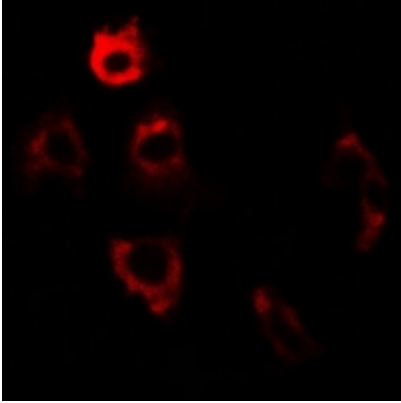
### WB description:

Western blot analysis of ERp5 expression in SW480 (A), HepG2 (B), mouse lung (C), mouse testis (D), rat liver (E) whole cell lysates.



### IF/ICC description:

Immunofluorescent analysis of ERp5 staining in U2OS cells. Formalin-fixed cells were permeabilized with 0.1% Triton X-100 in TBS for 5-10 minutes and blocked with 3% BSA-PBS for 30 minutes at room temperature. Cells were probed with the primary antibody i



**Storage:**

Store at -20°C. Avoid repeated freeze / thaw cycles.