

**Manufacturer/Supplier:**

WUXI DONGLIN SCI&TECH DEVELOPMENT CO., LTD

**Address:** A1-203 Mingpin CityII, No.8 Xihudong Road, Liangxi District  
Wuxi Jiangsu Province, China

TELE: 86-510-82732223

FAX: 86-510-82720101-8014

**Web :** [www.dldevelop.com](http://www.dldevelop.com)

Email: [info@dldevelop.com.cn](mailto:info@dldevelop.com.cn) [service@dldevelop.com.cn](mailto:service@dldevelop.com.cn)

**Product name:** Rabbit anti-MacroH2A1 Antibody

**Catalog:** DL96387A

**Synonyms:** MACROH2A1; Core histone macro-H2A.1;  
Histone macroH2A1; mH2A1; Histone H2A.y;  
H2A/y; Medulloblastoma antigen MU-MB-50.205

**Immunogen:** Recombinant full length protein of human  
MacroH2A1

**Form:** Liquid

**Concentration:** 1mg/mL

**Size:** 100 ul/50 ul

**Host:** Rabbit

**Reactivity:** Human, Mouse, Rat

**Application:** WB, IHC, IF/IC

**Clonality:** Polyclonal

**Dilution:** WB (1/500 - 1/2000),

IHC (1/50 - 1/200), IF/IC (1/50 - 1/100)

**Entrez Gene:** 9555/26914/29384

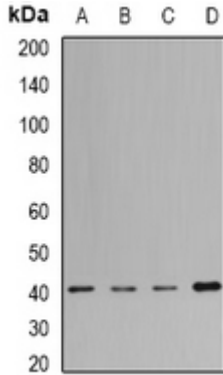
**SwissProt:** O75367/Q9QZQ8/Q02874

**Purification:** The antibody was purified by immunogen affinity chromatography.

**Buffer:** Liquid in 0.42% Potassium phosphate, 0.87% Sodium chloride, pH 7.3, 30% glycerol, and 0.01% sodium azide.

**WB description:**

Western blot analysis of MacroH2A1 expression in Jurkat (A), HeLa (B), mouse liver (C), rat lung (D) whole cell lysates.

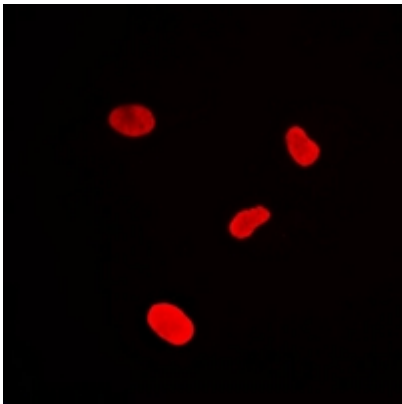


### IHC description:

Immunohistochemical analysis of MacroH2A1 staining in human kidney formalin fixed paraffin embedded tissue section. The section was pre-treated using heat mediated antigen retrieval with sodium citrate buffer (pH 6.0). The section was then incubated with the antibody at room temperature and detected using an HRP conjugated compact polymer system. DAB was used as the chromogen. The section was then counterstained with haematoxylin and mounted with DPX.

### IF/ICC description:

Immunofluorescent analysis of MacroH2A1 staining in U2OS cells. Formalin-fixed cells were permeabilized with 0.1% Triton X-100 in TBS for 5-10 minutes and blocked with 3% BSA-PBS for 30 minutes at room temperature. Cells were probed with the primary antib



**Storage:**

Store at -20°C. Avoid repeated freeze / thaw cycles.