

Manufacturer/Supplier:

WUXI DONGLIN SCI&TECH DEVELOPMENT CO., LTD

Address: A1-203 Mingpin CityII, No.8 Xihudong Road, Liangxi District
Wuxi Jiangsu Province, China

TELE: 86-510-82732223

FAX: 86-510-82720101-8014

Web : www.dldevelop.com

Email: info@dldevelop.com.cn service@dldevelop.com.cn

Product name: Rabbit anti-Mms2 Antibody

Catalog: DL96370A

Synonyms: MMS2; UEV2; Ubiquitin-conjugating enzyme E2 variant 2; DDVit 1; Enterocyte differentiation-associated factor 1; EDAF-1; Enterocyte differentiation-promoting factor 1; EDPF-1; MMS2 homolog; Vitamin D3-inducible protein

Immunogen: Recombinant full length protein of human Mms2

Form: Liquid

Concentration: 1mg/mL

Size: 100 ul/50 ul

Host: Rabbit

Reactivity: Human, Mouse, Rat

Application: WB, IHC

Clonality: Polyclonal

Dilution: WB (1/500 - 1/2000),
IHC (1/50 - 1/200)

Entrez Gene: 7336/70620/287927

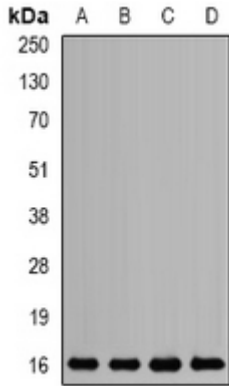
SwissProt: Q15819/Q9D2M8/Q7M767

Purification: The antibody was purified by immunogen affinity chromatography.

Buffer: Liquid in 0.42% Potassium phosphate, 0.87% Sodium chloride, pH 7.3, 30% glycerol, and 0.01% sodium azide.

WB description:

Western blot analysis of Mms2 expression in SKOV3 (A), HL60 (B), mouse liver (C), rat brain (D) whole cell lysates.



IHC description:

Immunohistochemical analysis of Mms2 staining in rat spleen formalin fixed paraffin embedded tissue section. The section was pre-treated using heat mediated antigen retrieval with sodium citrate buffer (pH 6.0). The section was then incubated with the antibody at room temperature and detected using an HRP conjugated compact polymer system. DAB was used as the chromogen. The section was then counterstained with haematoxylin and mounted with DPX.

Storage:

Store at -20°C. Avoid repeated freeze / thaw cycles.