

**Manufacturer/Supplier:**

WUXI DONGLIN SCI&TECH DEVELOPMENT CO., LTD

**Address:** A1-203 Mingpin CityII, No.8 Xihudong Road, Liangxi District  
Wuxi Jiangsu Province, China

**TELE:** 86-510-82732223

**FAX:** 86-510-82720101-8014

**Web :** [www.dldevelop.com](http://www.dldevelop.com)

**Email:** [info@dldevelop.com.cn](mailto:info@dldevelop.com.cn)    [service@dldevelop.com.cn](mailto:service@dldevelop.com.cn)

**Product name:** Rabbit anti-RISP Antibody

**Catalog:** DL96340A

**Synonyms:** Cytochrome b-c1 complex subunit Rieske,  
mitochondrial; Complex III subunit 5; Cytochrome  
b-c1 complex subunit 5; Rieske iron-sulfur protein;  
RISP; Ubiquinol-cytochrome c reductase iron-sulfur  
subunit

**Immunogen:** Recombinant full length protein of human RISP

**Form:** Liquid

**Concentration:** 1mg/mL

**Size:** 100 ul/50 ul

**Host:** Rabbit

**Reactivity:** Human

**Application:** WB, IF/IC

**Clonality:** Polyclonal

**Dilution:** WB (1/500 - 1/2000),  
IF/IC (1/10 - 1/100)

**Entrez Gene:** 7386

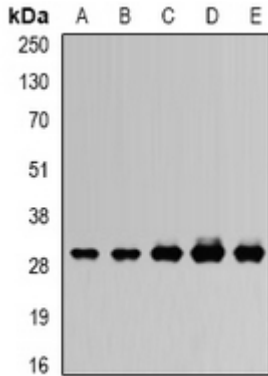
**SwissProt:** P47985

**Purification:** The antibody was purified by immunogen affinity chromatography.

**Buffer:** Liquid in 0.42% Potassium phosphate, 0.87% Sodium chloride, pH 7.3, 30% glycerol, and 0.01% sodium azide.

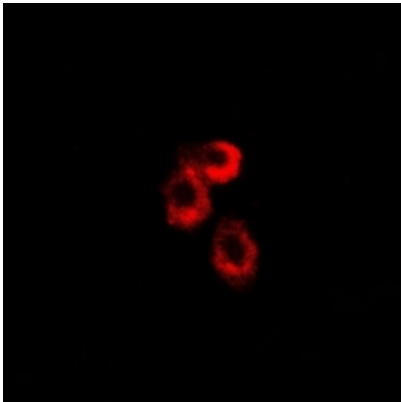
**WB description:**

Western blot analysis of RISP expression in SW620 (A), MCF7 (B), mouse heart (C), mouse ovary (D), rat kidney (E) whole cell lysates.



### IF/ICC description:

Immunofluorescent analysis of RISP staining in U2OS cells. Formalin-fixed cells were permeabilized with 0.1% Triton X-100 in TBS for 5-10 minutes and blocked with 3% BSA-PBS for 30 minutes at room temperature. Cells were probed with the primary antibody i



### Storage:



Store at -20°C. Avoid repeated freeze / thaw cycles.