

Manufacturer/Supplier:

WUXI DONGLIN SCI&TECH DEVELOPMENT CO., LTD

Address: A1-203 Mingpin CityII, No.8 Xihudong Road, Liangxi District
Wuxi Jiangsu Province, China

TELE: 86-510-82732223

FAX: 86-510-82720101-8014

Web : www.dldevelop.com

Email: info@dldevelop.com.cn service@dldevelop.com.cn

Product name: Rabbit anti-Atase Antibody

Catalog: DL96312A

Synonyms: GPAT; Amidophosphoribosyltransferase; ATase;
Glutamine phosphoribosylpyrophosphate
amidotransferase; GPAT

Immunogen: Recombinant full length protein of human Atase

Form: Liquid

Concentration: 1mg/mL

Size: 100 ul/50 ul

Host: Rabbit

Reactivity: Human, Mouse, Rat

Application: WB, IHC

Clonality: Polyclonal

Dilution: WB (1/500 - 1/2000),
IHC (1/50 - 1/200)

Entrez Gene: 5471/117544

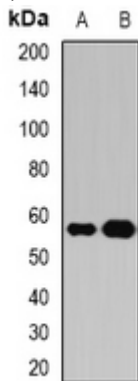
SwissProt: Q06203/P35433

Purification: The antibody was purified by immunogen affinity chromatography.

Buffer: Liquid in 0.42% Potassium phosphate, 0.87% Sodium chloride, pH 7.3, 30% glycerol, and 0.01% sodium azide.

WB description:

Western blot analysis of Atase expression in HepG2 (A), COS7 (B) whole cell lysates.



IHC description:

Immunohistochemical analysis of Atase staining in mouse lung

formalin fixed paraffin embedded tissue section. The section was pre-treated using heat mediated antigen retrieval with sodium citrate buffer (pH 6.0). The section was then incubated with the antibody at room temperature and detected using an HRP conjugated compact polymer system. DAB was used as the chromogen. The section was then counterstained with haematoxylin and mounted with DPX.

Storage:

Store at -20°C. Avoid repeated freeze / thaw cycles.