

Manufacturer/Supplier:

WUXI DONGLIN SCI&TECH DEVELOPMENT CO., LTD

Address: A1-203 Mingpin CityII, No.8 Xihudong Road, Liangxi District
Wuxi Jiangsu Province, China

TELE: 86-510-82732223

FAX: 86-510-82720101-8014

Web : www.dldevelop.com

Email: info@dldevelop.com.cn service@dldevelop.com.cn

Product name: Rabbit anti-Int11 Antibody

Catalog: DL96272A

Synonyms: INTS11; RC68; Integrator complex subunit 11;
Int11; Cleavage and polyadenylation-specific factor
3-like protein; CPSF3-like protein; Protein related
to CPSF subunits of 68 kDa; RC-68

Immunogen: Recombinant full length protein of human Int11

Form: Liquid

Concentration: 1mg/mL

Size: 100 ul/50 ul

Host: Rabbit

Reactivity: Human

Application: WB, IF/IC

Clonality: Polyclonal

Dilution: WB (1/500 - 1/2000),

IF/IC (1/10 - 1/100)

Entrez Gene: 54973

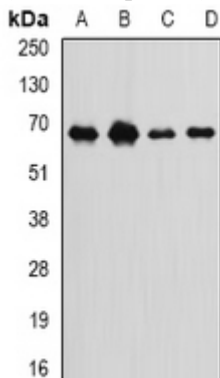
SwissProt: Q5TA45

Purification: The antibody was purified by immunogen affinity chromatography.

Buffer: Liquid in 0.42% Potassium phosphate, 0.87% Sodium chloride, pH 7.3, 30% glycerol, and 0.01% sodium azide.

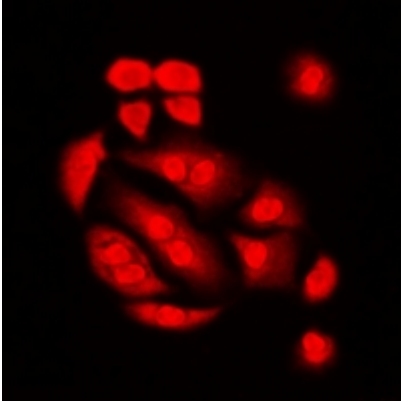
WB description:

Western blot analysis of Int11 expression in SKOV3 (A), MCF7 (B), mouse spleen (C), rat liver (D) whole cell lysates.



IF/ICC description:

Immunofluorescent analysis of Int11 staining in Hela cells. Formalin-fixed cells were permeabilized with 0.1% Triton X-100 in TBS for 5-10 minutes and blocked with 3% BSA-PBS for 30 minutes at room temperature. Cells were probed with the primary antibody



Storage:

Store at -20°C. Avoid repeated freeze / thaw cycles.