

Manufacturer/Supplier:

WUXI DONGLIN SCI&TECH DEVELOPMENT CO., LTD

Address: A1-203 Mingpin CityII, No.8 Xihudong Road, Liangxi District
Wuxi Jiangsu Province, China

TELE: 86-510-82732223

FAX: 86-510-82720101-8014

Web : www.dldevelop.com

Email: info@dldevelop.com.cn service@dldevelop.com.cn

Product name: Rabbit anti-Calpain reg Antibody

Catalog: DL96266A

Synonyms: CAPN4; CAPNS; Calpain small subunit 1; CSS1;
Calcium-activated neutral proteinase small subunit;
CANP small subunit; Calcium-dependent protease
small subunit; CDPS; Calcium-dependent protease
small subunit 1; Calpain regulatory subunit

Immunogen: Recombinant full length protein of human Calpain
reg

Form: Liquid

Concentration: 1mg/mL

Size: 100 ul/50 ul

Host: Rabbit

Reactivity: Human, Mouse, Rat

Application: WB, IHC

Clonality: Polyclonal

Dilution: WB (1/500 - 1/2000),
IHC (1/50 - 1/200)

Entrez Gene: 826/12336/29156

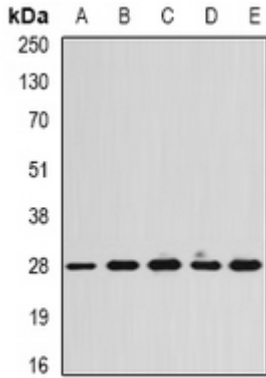
SwissProt: P04632/O88456/Q64537

Purification: The antibody was purified by immunogen affinity chromatography.

Buffer: Liquid in 0.42% Potassium phosphate, 0.87% Sodium chloride, pH 7.3, 30% glycerol, and 0.01% sodium azide.

WB description:

Western blot analysis of Calpain reg expression in Hela (A), SKOV3 (B), mouse heart (C), mouse spleen (D), rat lung (E) whole cell lysates.



IHC description:

Immunohistochemical analysis of Calpain reg staining in human liver cancer formalin fixed paraffin embedded tissue section. The section was pre-treated using heat mediated antigen retrieval with sodium citrate buffer (pH 6.0). The section was then incubated with the antibody at room temperature and detected using an HRP conjugated compact polymer system. DAB was used as the chromogen. The section was then counterstained with haematoxylin and mounted with DPX.

Storage:

Store at -20°C. Avoid repeated freeze / thaw cycles.