

Manufacturer/Supplier:

WUXI DONGLIN SCI&TECH DEVELOPMENT CO., LTD

Address: A1-203 Mingpin CityII, No.8 Xihudong Road, Liangxi District
Wuxi Jiangsu Province, China

TELE: 86-510-82732223

FAX: 86-510-82720101-8014

Web : www.dldevelop.com

Email: info@dldevelop.com.cn service@dldevelop.com.cn

Product name: Rabbit anti-DDAH2 Antibody

Catalog: DL96251A

Synonyms: DDAH; G6A; NG30; N(G),N(G)-dimethylarginine dimethylaminohydrolase 2; DDAH-2;
Dimethylarginine dimethylaminohydrolase 2;
DDAHII; Dimethylargininase-2; Protein G6a;
S-phase protein

Immunogen: Recombinant full length protein of human DDAH2

Form: Liquid

Concentration: 1mg/mL

Size: 100 ul/50 ul

Host: Rabbit

Reactivity: Human, Mouse, Rat

Application: WB, IF/IC

Clonality: Polyclonal

Dilution: WB (1/500 - 1/2000),
IF/IC (1/10 - 1/100)

Entrez Gene: 23564/51793/294239

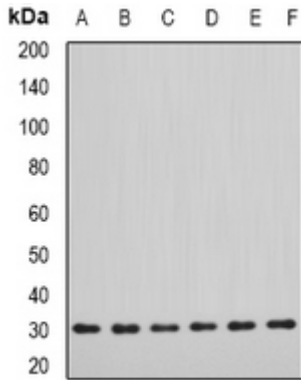
SwissProt: O95865/Q99LD8/Q6MG60

Purification: The antibody was purified by immunogen affinity chromatography.

Buffer: Liquid in 0.42% Potassium phosphate, 0.87% Sodium chloride, pH 7.3, 30% glycerol, and 0.01% sodium azide.

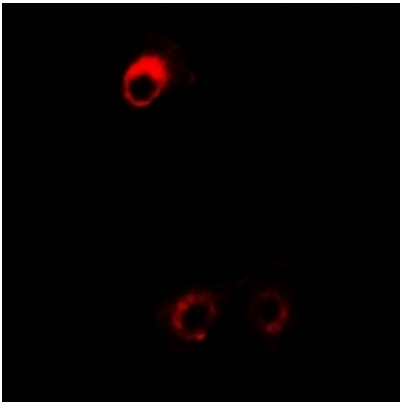
WB description:

Western blot analysis of DDAH2 expression in SW620 (A), MCF7 (B), mouse lung (C), mouse kidney (D), rat heart (E), rat brain (F) whole cell lysates.



IF/ICC description:

Immunofluorescent analysis of DDAH2 staining in HeLa cells. Formalin-fixed cells were permeabilized with 0.1% Triton X-100 in TBS for 5-10 minutes and blocked with 3% BSA-PBS for 30 minutes at room temperature. Cells were probed with the primary antibody



Storage:



Store at -20°C. Avoid repeated freeze / thaw cycles.